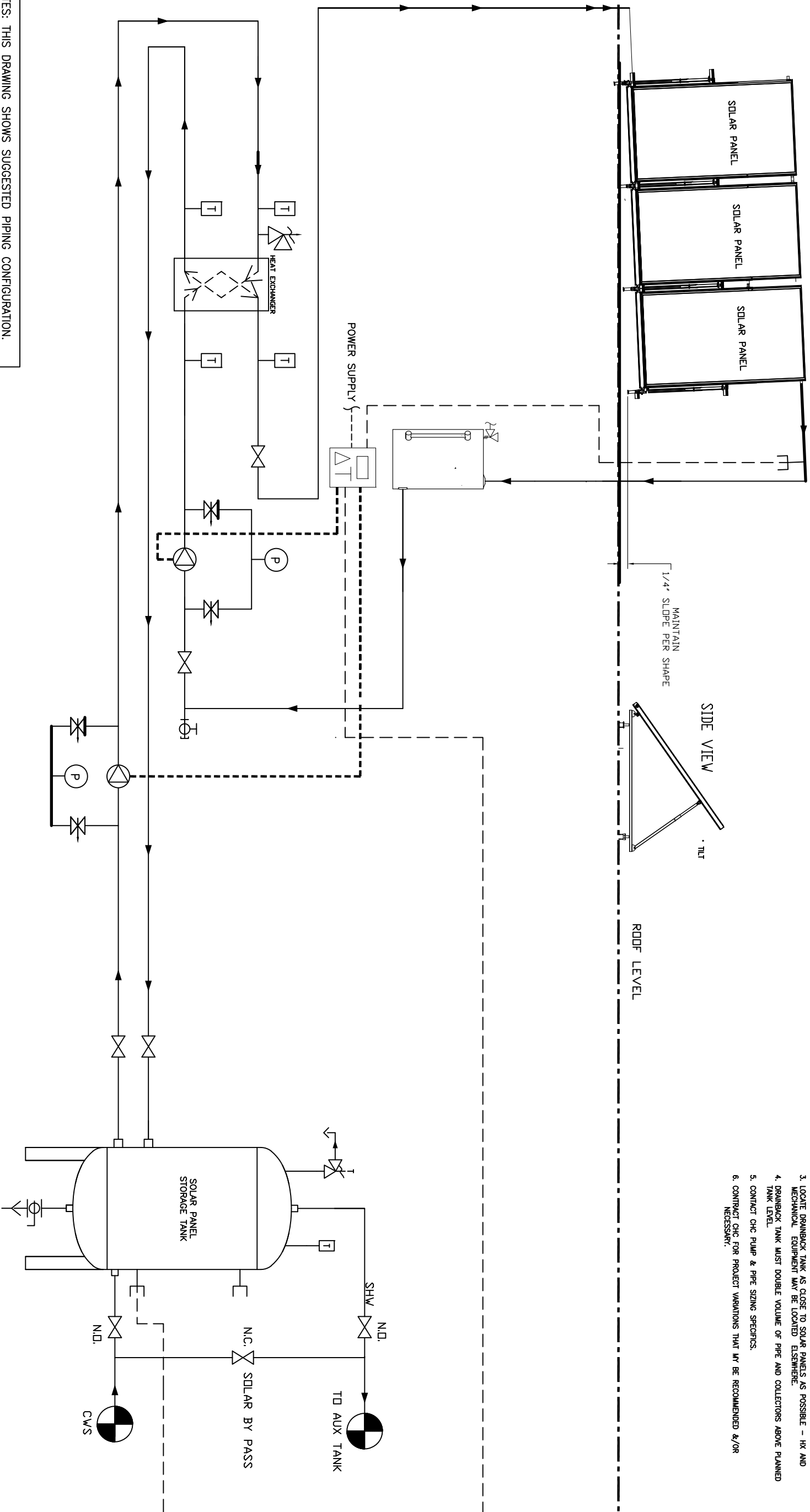


- NOTES:
1. THIS DRAWING IS TYPICAL FOR COMMON DRAINBACK SOLAR THERMAL SYSTEM NOT INTENDED AS PROJECT SPECIFIC.
 2. ALL EXPOSED PIPING AND COLLECTORS MUST SLOPE 1/4" PER FOOT BACK TO DRAIN BACK TANK.
 3. LOCATE DRAINBACK TANK AS CLOSE TO SOLAR PANELS AS POSSIBLE - HX AND MECHANICAL EQUIPMENT MAY BE LOCATED ELSEWHERE.
 4. DRAINBACK TANK MUST DOUBLE VOLUME OF PIPE AND COLLECTORS ABOVE PLANNED TANK LEVEL.
 5. CONTACT CHC PUMP & PIPE SIZING SPECIFICS.
 6. CONTACT CHC FOR PROJECT VARIATIONS THAT MAY BE RECOMMENDED &/OR NECESSARY.



NOTES: THIS DRAWING SHOWS SUGGESTED PIPING CONFIGURATION. CHECK WITH LOCAL CODES AND ORDINANCES FOR ADDITIONAL REQUIREMENTS.

REV	DESCRIPTION	BY	DATE	THIS DRAWING AND THE INFORMATION CONTAINED HEREIN ARE THE PROPERTY OF CHC, CALIFORNIA HYDRONICS CORP. CONFERENCE AND SHALL NOT BE REPRODUCED OR TRANSMITTED IN ANY FORM OR BY ANY MEANS, ELECTRONIC OR MECHANICAL, WITHOUT PRIOR WRITTEN PERMISSION OF CHC.	PROJECT NAME:	DRAWING TITLE:	DRAWING No.	REV	SCALE	DATE	SIZE	ANGLE	DEC.	APPROVED	CHECKED	DATE	BY	DESCRIPTION	
					TYPICAL DRAINBACK SYSTEM W/1 ARRAY OF FLATE PLATE COLLECTORS	S-DB-FP-1	A	500"	5										

CALIFORNIA • RENO
800.486.4858
WASHINGTON • OREGON
ALASKA • IDAHO • MONTANA
888.690.0090