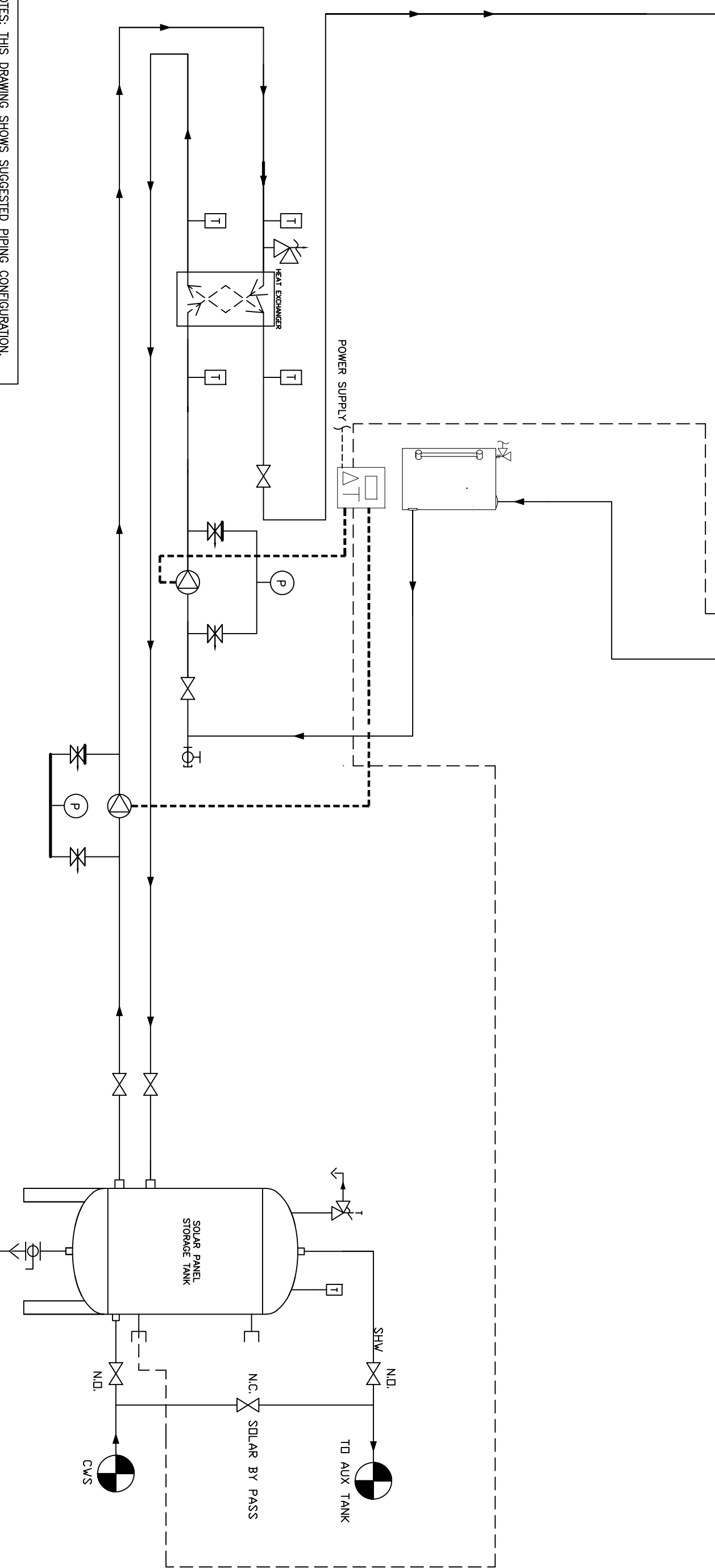


- NOTES:
1. THIS DRAWING IS TYPICAL FOR COMMON DRAINBACK SOLAR THERMAL SYSTEM NOT INTENDED AS PROJECT SPECIFIC.
 2. ALL EXPOSED PIPING AND COLLECTORS MUST SLOPE 1/4" PER FOOT BACK TO DRAIN BACK TANK.
 3. LOCATE DRAINBACK TANK AS CLOSE TO SOLAR PANELS AS POSSIBLE - HV AND MECHANICAL EQUIPMENT MAY BE LOCATED ELSEWHERE.
 4. DRAINBACK TANK MUST DOUBLE VOLUME OF PIPE AND COLLECTORS ABOVE PLANNED TANK LEVEL.
 5. CONTACT CHC PUMP & PIPE SIZING SPECIFICS.
 6. CONTACT CHC FOR PROJECT VARIATIONS THAT MAY BE RECOMMENDED &/OR NECESSARY.



NOTES: THIS DRAWING SHOWS SUGGESTED PIPING CONFIGURATION. CHECK WITH LOCAL CODES AND ORDINANCES FOR ADDITIONAL REQUIREMENTS.

| | | | | | | |
|---|--|---------------------|--|--------------------------|------|--|
| REV | | DESCRIPTION | | BY | DATE | <p>THIS DRAWING AND THE INFORMATION DEPICTED THEREIN IS THE PROPERTY OF FLOWTHERM SYSTEMS, A DIVISION OF CHC. IT IS TO BE USED AS A GUIDE ONLY. NO WARRANTIES, EXPRESS OR IMPLIED, ARE MADE BY CHC FOR THE MANUFACTURING, REPRODUCTION OR COPIED, OR USED AS THE BASIS FOR THE MANUFACTURING, WITHOUT PRIOR WRITTEN PERMISSION OF CHC.</p> |
| PROJECT NAME: | | | | | | |
| PROJECT LOCATION: | | | | | | |
| ENGINEER: | | | | | | |
| CUSTOMER: | | | | | | |
| DRAWING TITLE: | | DRAWING No. | | SCALE | | |
| TYPICAL DRAINBACK SYSTEM WITH 1/ ARRAY OF APRICUS EVACUATED TUBE COLLECTORS | | S-DB-ET-1 | | AS SHOWN | | |
| DRAWN BY/DATE | | CHECKED BY/DATE | | SCALE | | |
| DK / 06/20/12 | | JTB/06/20/12 | | AS SHOWN | | |
| CHC | | CHC | | CHC | | |
| CALIFORNIA • RENO | | WASHINGTON • OREGON | | ALASKA • IDAHO • MONTANA | | |
| 800.486.4858 | | 888.690.0090 | | | | |