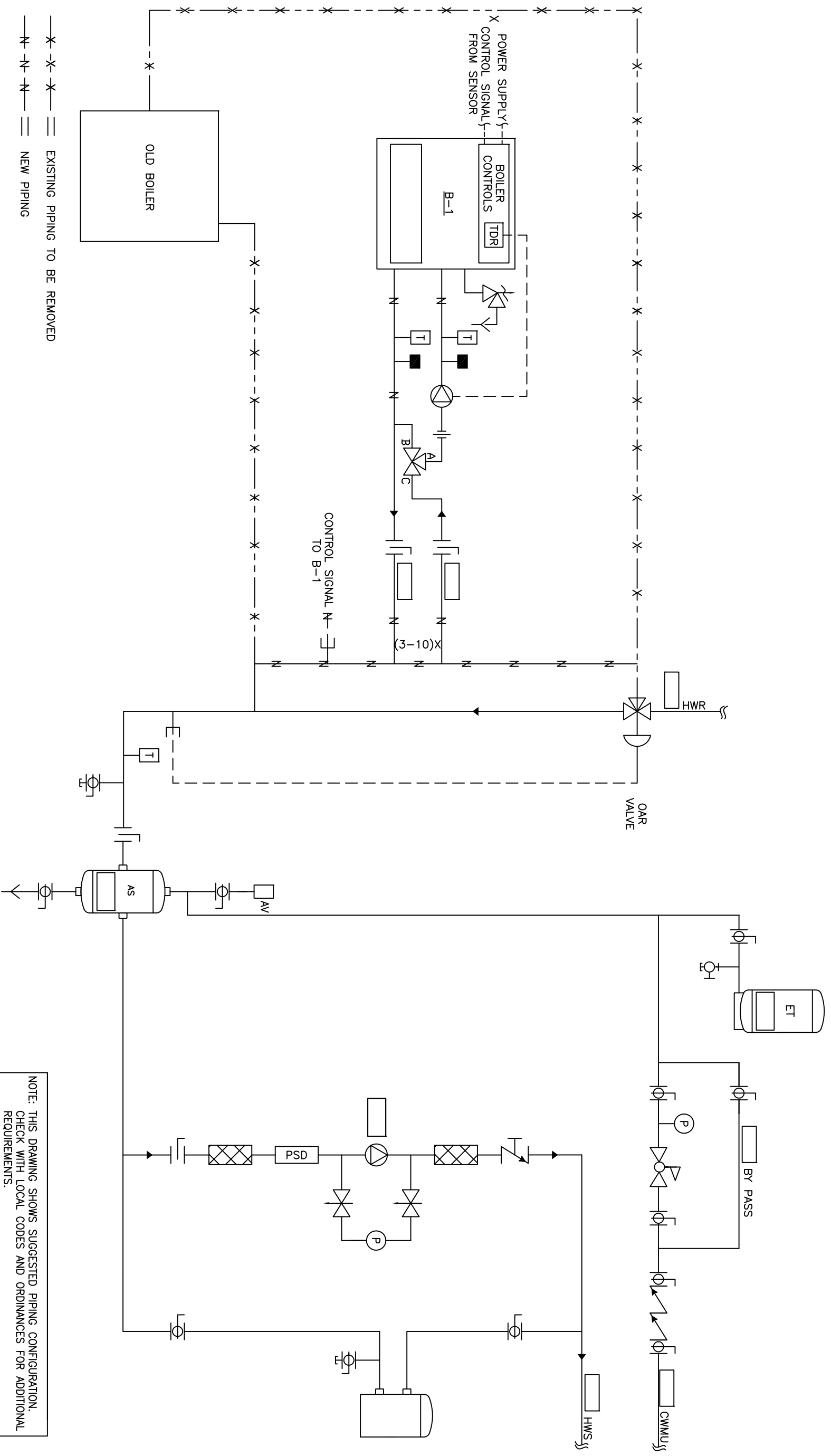



RECC ALL PIPING TO BE SIZED PER ASHARE F36



- - - - - X - - - - - X
 - - - - - N - - - - - N
 - - - - - = - - - - -
 EXISTING PIPING TO BE REMOVED
 NEW PIPING

NOTE: THIS DRAWING SHOWS SUGGESTED PIPING CONFIGURATION. CHECK WITH LOCAL CODES AND ORDINANCES FOR ADDITIONAL REQUIREMENTS.

THIS DRAWING AND THE INFORMATION CONTAINED HEREIN ARE THE PROPERTY OF CHC, CALIFORNIA HYDRONICS CORP. COPIES ARE ISSUED IN STRICT CONFIDENCE AND SHALL NOT BE REPRODUCED OR TRANSMITTED IN ANY FORM OR BY ANY MEANS, ELECTRONIC OR MECHANICAL, INCLUDING PHOTOCOPYING, RECORDING, OR BY ANY INFORMATION STORAGE AND RETRIEVAL SYSTEMS WITHOUT PRIOR WRITTEN PERMISSION OF CHC.	
PROJECT TITLE: RETRO FIT SYSTEM WITH EXISTING OAR VALVE	DRAWING TITLE: HYDRONIC PRIMARY/SECONDARY - SEALED COMBUSTION BOILER, INDIVIDUAL FPE VALVE, WITH SYSTEM PUMP
PROJECT LOCATION: ENGINEER: CUSTOMER:	DRAWING No. H-PS-CUSTOM
DATE: 04/13/09 BY: DK	TOLERANCES UNLESS OTHERWISE SPECIFIED: DRAWN BY/DATE: DK 04/13/09 CHECKED: APPROVED/DEC: 500" SIZE: 0 SCALE: NTS
REVISED: A DESCRIPTION:	REV: A  CHC CALIFORNIA • RENO 800.486.4858 WASHINGTON • OREGON ALASKA • IDAHO • MONTANA 888.690.0090