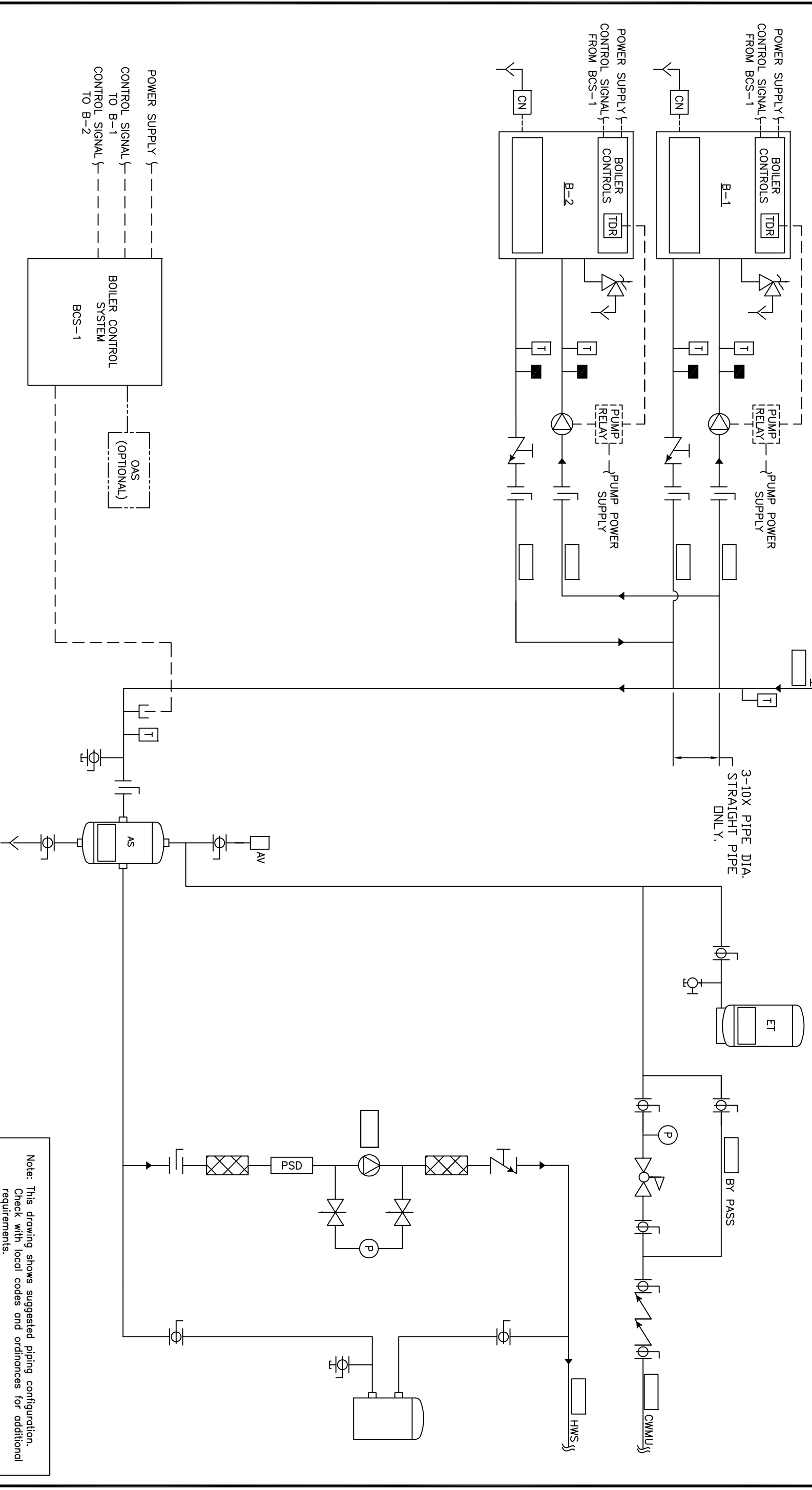


Recc all piping to be sized per ASHRAE F36.



Note: This drawing shows suggested piping configuration. Check with local codes and ordinances for additional requirements.

REV		DESCRIPTION		BY	DATE	THIS DRAWING AND THE INFORMATION DERIVED THEREIN IS THE PROPERTY OF CHC, CALIFORNIA HYDRONICS CORP. COPIES ARE ISSUED IN STRICT CONFIDENCE AND ARE NOT TO BE REPRODUCED OR COPIED OR USED AS THE BASIS FOR THE MANUFACTURING, INSTALLATION OR SALE OF PRODUCT WITHOUT PRIOR WRITTEN PERMISSION OF CHC.		PROJECT NAME:	DRAWING TITLE:	
A	RELEASED			RSG	05/28/08			PROJECT LOCATION:	HYDRONIC PRIMARY/SECONDARY - 2 FULLY CONDENSING BOILERS, BUILT IN TEMP PROTECTION WITH EXTERNAL PRIMARY PUMP STARTER AND SYSTEM PUMP	
								ENGINEER:	DRAWING No. H-PS-402-2BI-1	
								CUSTOMER:	TOLERANCES UNLESS OTHERWISE SPECIFIED DRAWN BY/DWG. 60 ZJ/08 CHECKED/APP/DEC. 500"	
									SCALE	REV
									A	A

