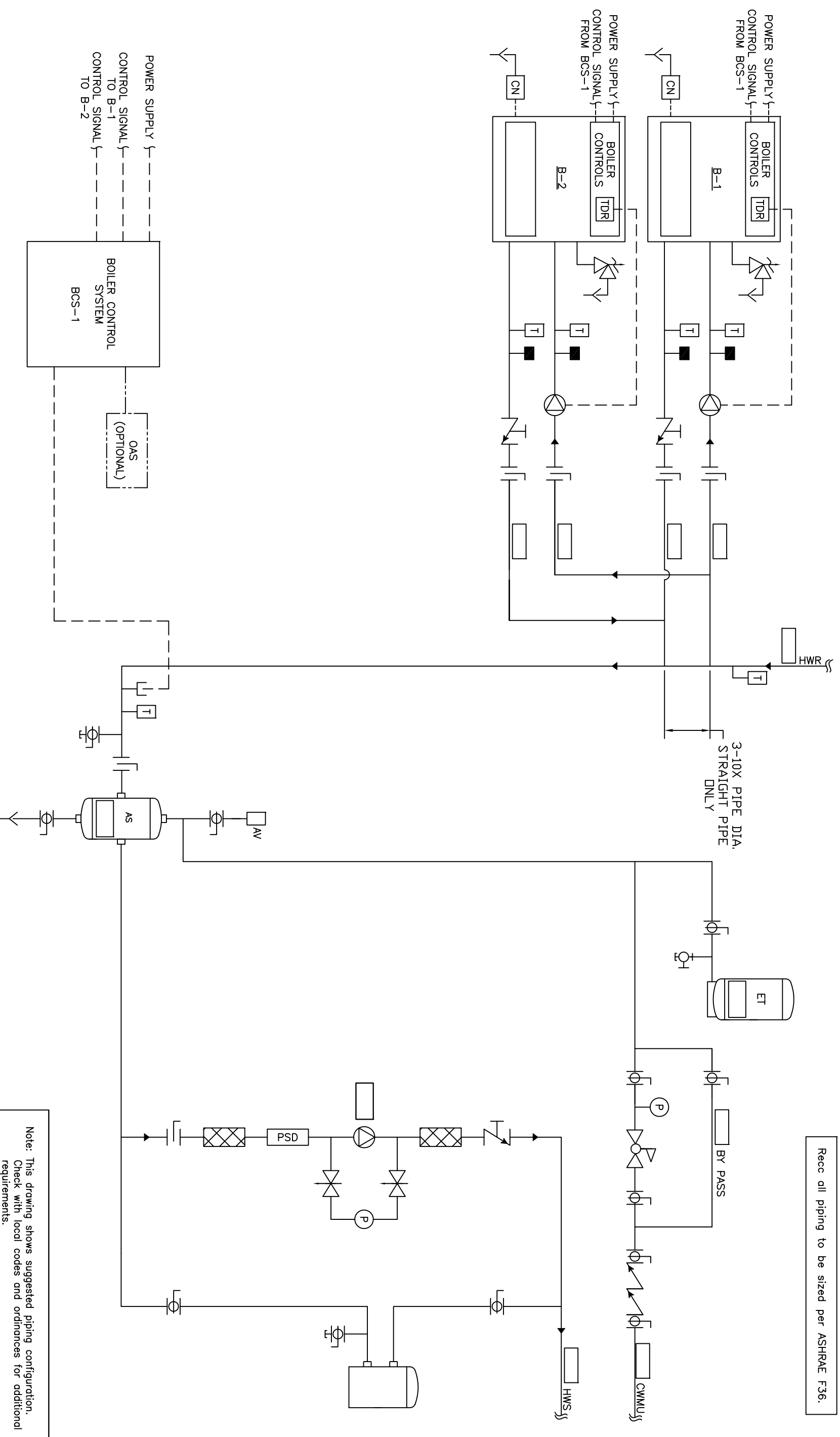


Recc all piping to be sized per ASHRAE F36.



Note: This drawing shows suggested piping configuration. Check with local codes and ordinances for additional requirements.

PROJECT NAME:		THIS DRAWING AND THE INFORMATION DEPICTED THEREIN IS THE PROPERTY OF CHC. IT IS TO BE USED ONLY FOR THE PROJECT SPECIFICALLY IDENTIFIED HEREIN. ANY REPRODUCTION OR USE FOR OTHER PROJECTS WITHOUT WRITTEN PERMISSION OF CHC.	
PROJECT LOCATION:		ENGINEER:	
DRAWING TITLE:		DRAWING No.:	
HYDRONIC PRIMARY/SECONDARY - 2 FULLY CONDENSING BOILERS, BUILT IN TEMP PROTECTION WITH SYSTEM PUMP		H-PS-400-2BI-1	
DRAWING No.:		DRAWN BY:	
H-PS-400-2BI-1		BRYANNE	
CHECKED BY:		CHECKED BY:	
JULIE		JULIE	
SCALE:		SCALE:	
A		A	
REV:		REV:	
A		A	
RELEASED		RSG 05/28/08	
DESCRIPTION:		BY:	
REV:		DATE:	
A		RSG 05/28/08	

