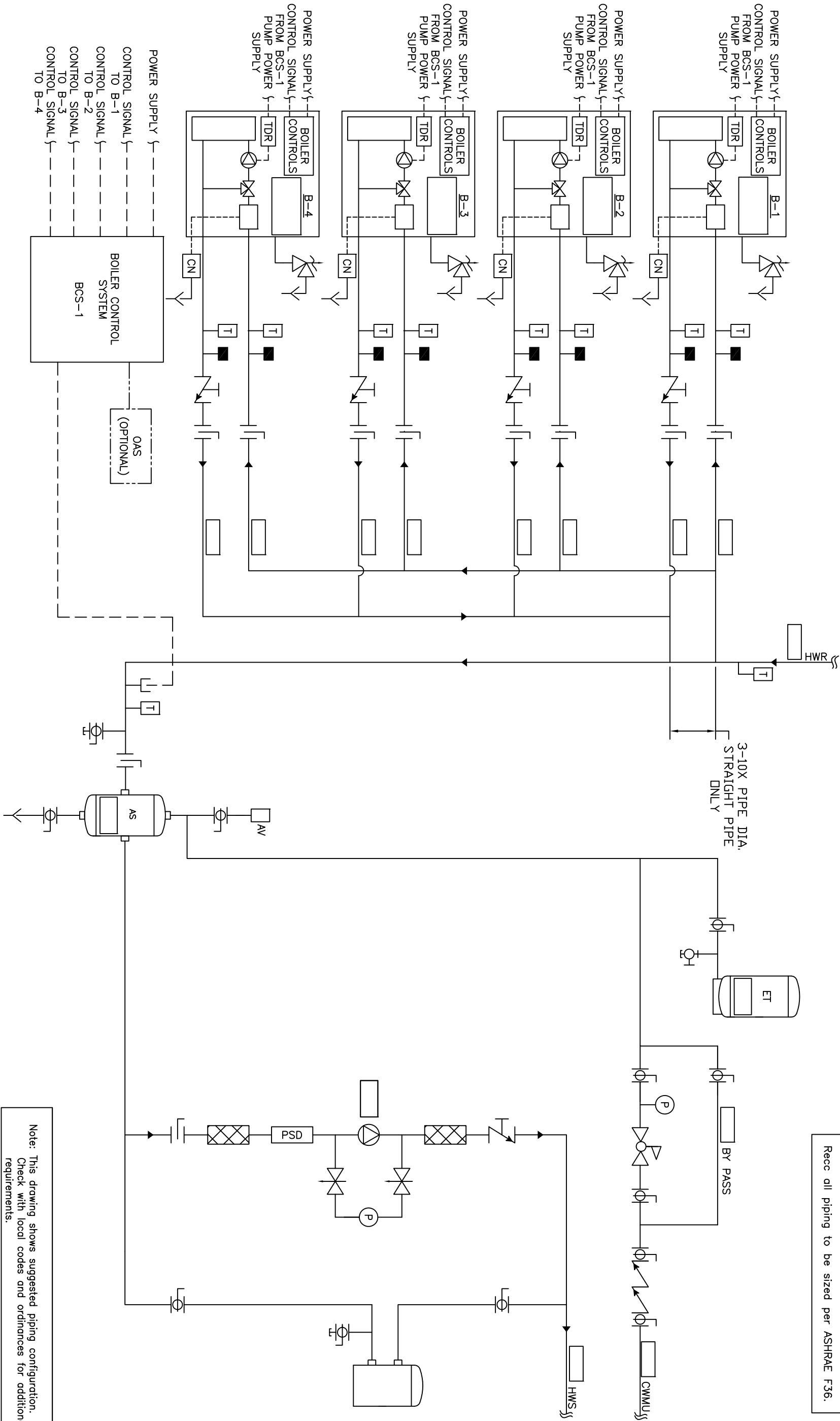


Recc all piping to be sized per ASHRAE F36.



Note: This drawing shows suggested piping configuration. Check with local codes and ordinances for additional requirements.

		PROJECT NAME:		THIS DRAWING AND THE INFORMATION DEPICTED THEREIN IS THE PROPERTY OF CHC, CALIFORNIA HYDRONICS CORP., AND IS NOT TO BE REPRODUCED OR USED AS THE BASIS FOR THE MANUFACTURING, INSTALLATION OR SALE OF PRODUCT WITHOUT WRITTEN PERMISSION OF CHC.		DRAWING TITLE: PRIMARY/SECONDARY - 4 CONDENSING ECONOMIZER CONDENSING BUILT IN TEMP PROTECTION SYSTEM PUMP		CALIFORNIA • RENO 800.486.4858	
		PROJECT LOCATION:		ENGINEER:		DRAWING NO. H-PS-301-4B1-1		WASHINGTON • OREGON	
A		RELEASED		RSG 05/28/08		TOLERANCES UNLESS OTHERWISE SPECIFIED: 300" ANGLES 5" SIZE D		ALASKA • IDAHO • MONTANA 888.690.0090	
REV		DESCRIPTION		BY		DATE		CUSTOMER:	

