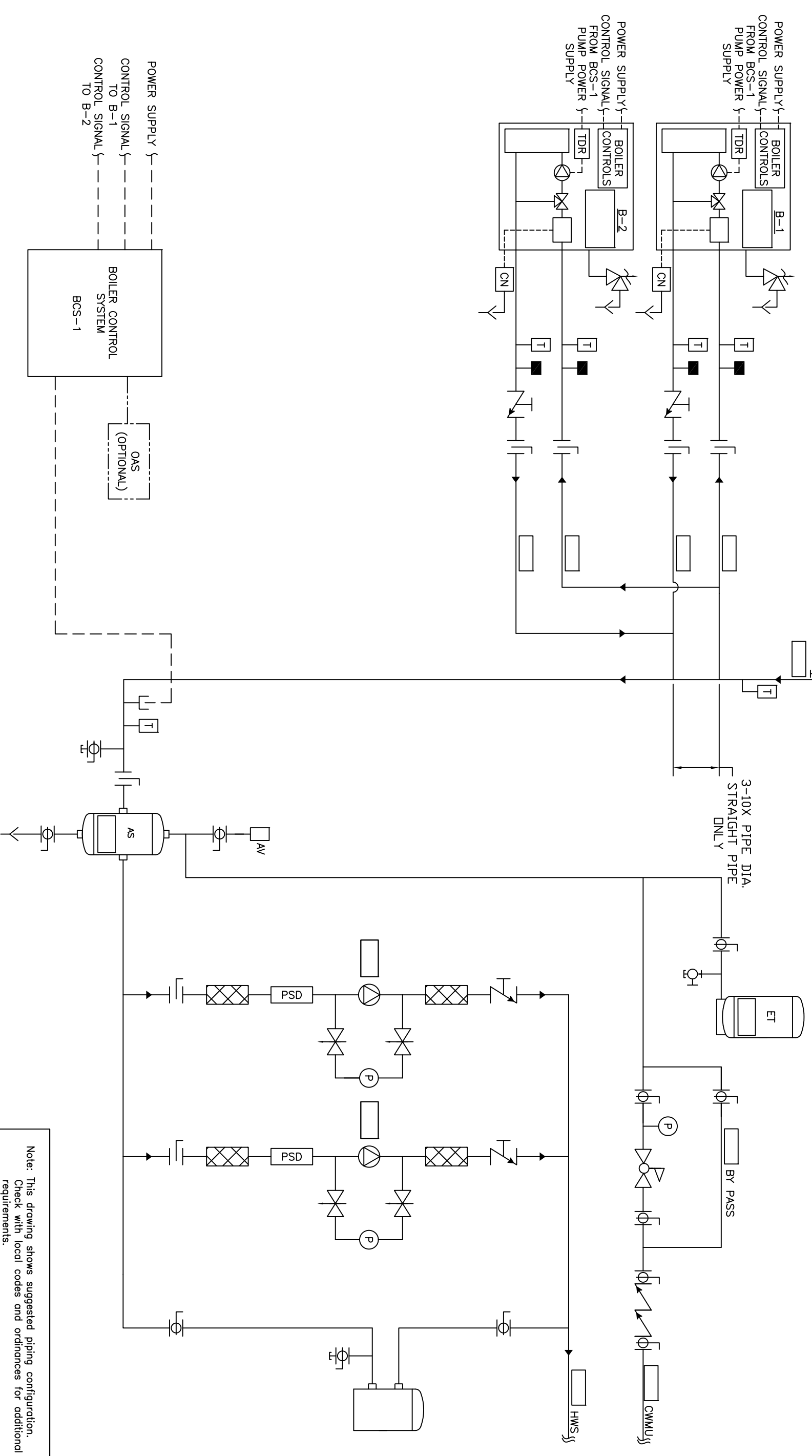


Recc all piping to be sized per ASHRAE F36.



Note: This drawing shows suggested piping configuration. Check with local codes and ordinances for additional requirements.

REV		DESCRIPTION		BY		DATE		THIS DRAWING AND THE INFORMATION DERIVED THEREIN IS THE PROPERTY OF CHC, CALIFORNIA HYDRONICS CORP. COPIES ARE ISSUED IN STRICT CONFIDENCE AND ARE NOT TO BE REPRODUCED OR USED AS THE BASIS FOR THE MANUFACTURING, INSTALLATION OR SALE OF PRODUCT WITHOUT PRIOR WRITTEN PERMISSION OF CHC.	
A		RELEASED		RSG		05/28/08		PROJECT NAME: PROJECT LOCATION: ENGINEER: DRAWING No. H-PS-301-2BI-2 DRAWN BY/DWG. NO. 50/23/08 CHECKED/DATE 5/23/08 TOLERANCES UNLESS OTHERWISE SPECIFIED: 300" ANGLE 5" SCALE A REVISIONS:	
								DRAWING TITLE: HYDRONIC PRIMARY/SECONDARY - 2 ECONOMIZER CONDENSING BOILERS, BUILT IN PROTECTION WITH SEPARATE PRIMARY PUMP POWER AND 2 SYSTEM PUMPS	
								CALIFORNIA • RENO 800.486.4858 WASHINGTON • OREGON ALASKA • IDAHO • MONTANA 888.690.0090	

