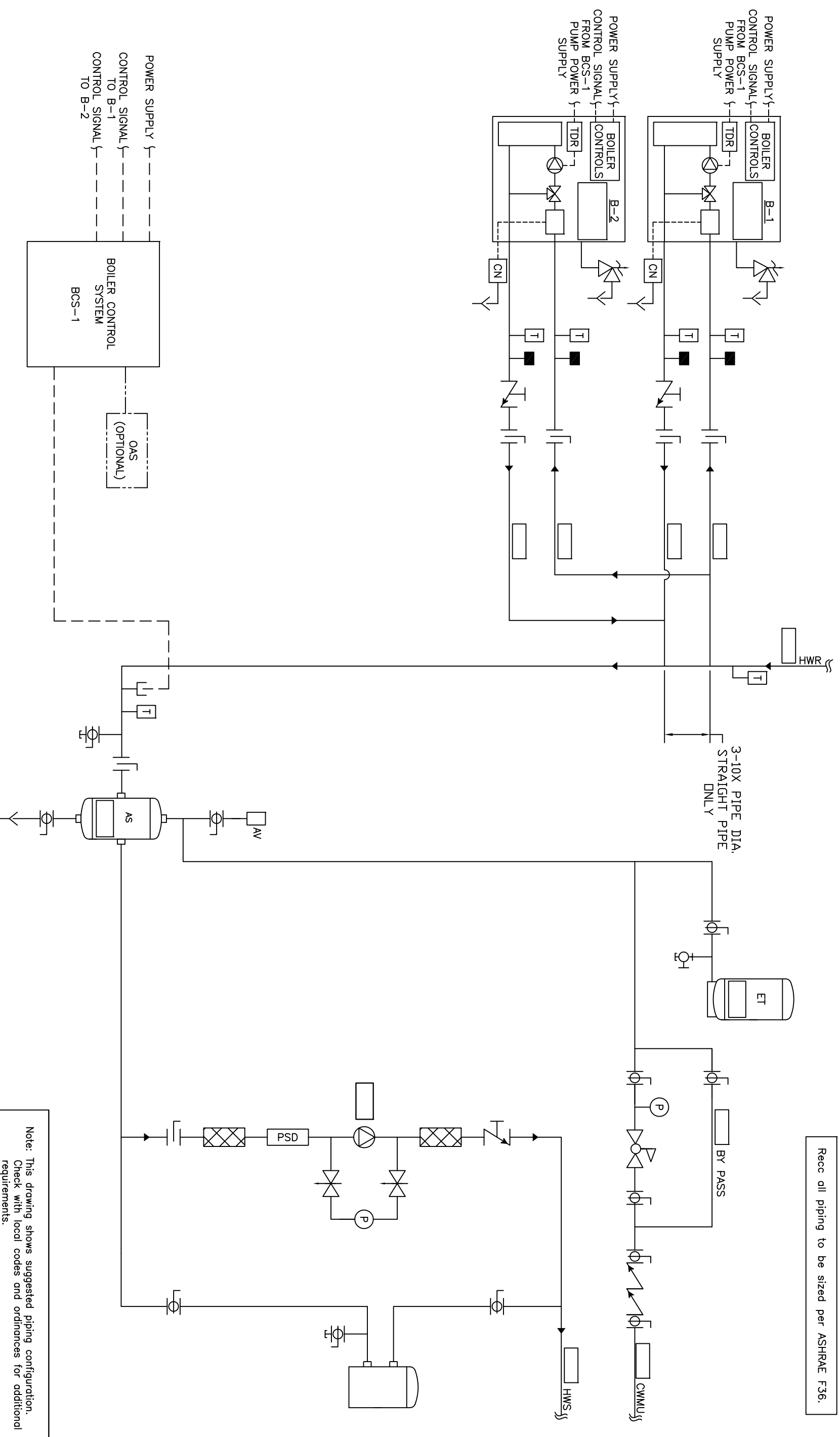


Recc all piping to be sized per ASHRAE F36.



Note: This drawing shows suggested piping configuration. Check with local codes and ordinances for additional requirements.

| | | | |
|--|--|--|--|
| PROJECT NAME: | | THIS DRAWING AND THE INFORMATION DEPICTED THEREIN IS THE PROPERTY OF CHC. REPRODUCTION OR USE AS THE BASIS FOR THE MANUFACTURING, WITHOUT PRIOR WRITTEN PERMISSION OF CHC. | |
| PROJECT LOCATION: | | ENGINEER: | |
| DRAWING TITLE: | | DRAWING No. | |
| HYDRONIC PRIMARY/SECONDARY - 2 ECONOMIZER CONDENSING BOILERS, BUILT IN PROTECTION WITH SEPARATE PRIMARY PUMP POWER AND SYSTEM PUMP | | H-PS-301-2B1-1 | |
| DRAWING No. | | CHECKED | |
| H-PS-301-2B1-1 | | APPROVED | |
| DRAWN BY/DATE | | SCALE | |
| RSG 05/28/08 | | 500" | |
| BY | | DATE | |
| DESCRIPTION | | REV | |
| A RELEASED | | A | |

CALIFORNIA • RENO
800.486.4858
WASHINGTON • OREGON
ALASKA • IDAHO • MONTANA
888.690.0090