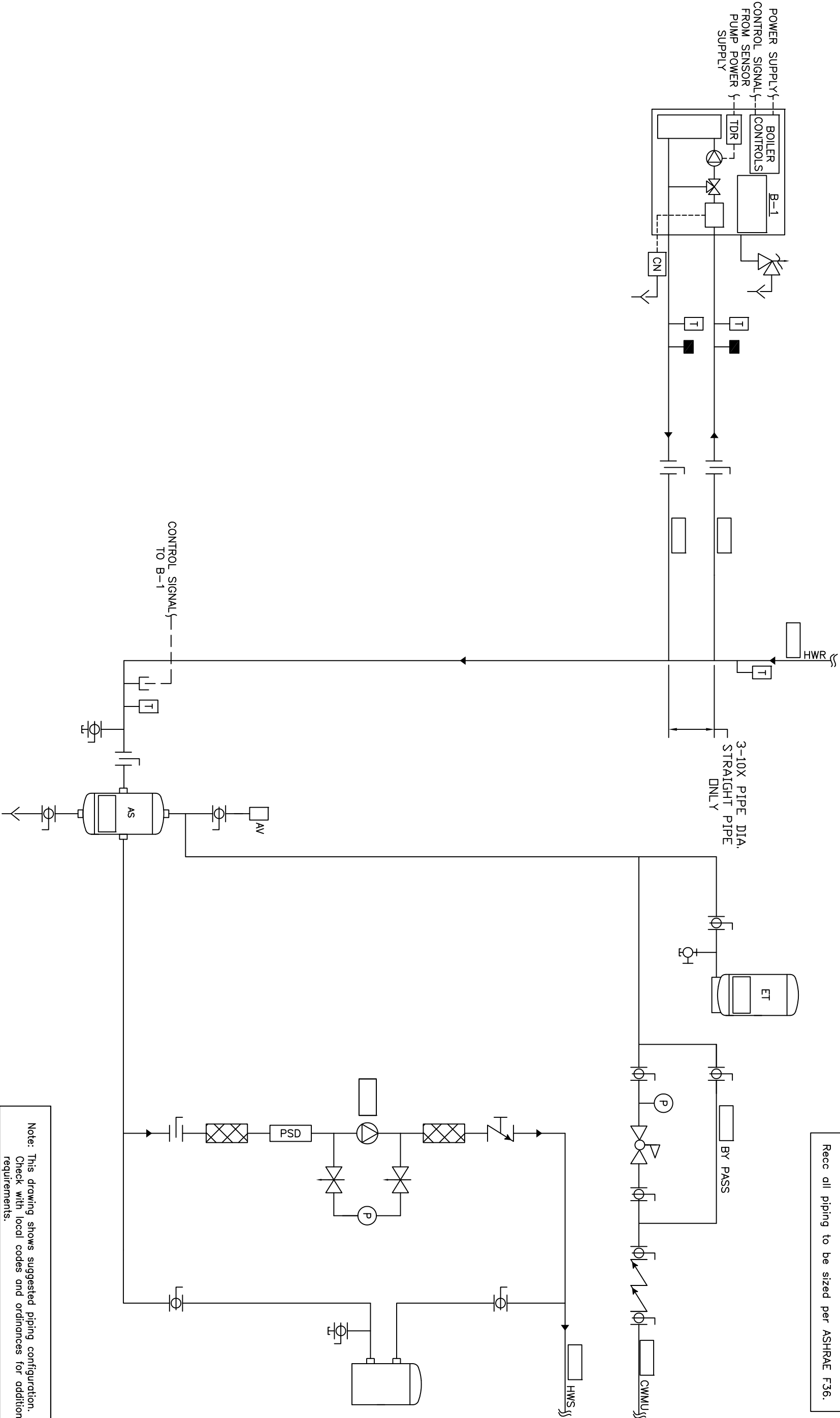


Recc all piping to be sized per ASHRAE F36.



Note: This drawing shows suggested piping configuration. Check with local codes and ordinances for additional requirements.

THIS DRAWING AND THE INFORMATION CONTAINED HEREIN ARE THE PROPERTY OF CHC, CALIFORNIA HYDRONICS CORP. - CONFERENCE AND SHALL NOT BE REPRODUCED OR COPIED IN ANY MANNER WITHOUT PRIOR WRITTEN PERMISSION OF CHC.		PROJECT NAME:		DRAWING TITLE:	
PROJECT LOCATION:		HYDROVIC PRIMARY/SECONDARY - ECONOMIZER CONDENSING BOILER, BUILT IN TEMP PROTECTION WITH SEPARATE PRIMARY PUMP POWER AND SYSTEM PUMP		DRAWING No. H-PS-301-1BI-1	
ENGINEER:		ENGINEER:		REV A	
RSG 05/28/08		RSG 05/28/08		TOLERANCES UNLESS OTHERWISE SPECIFIED	
DESCRIPTION		BY		DATE	
REV		DESCRIPTION		BY	



CHC

CALIFORNIA • RENO
800.486.4858
WASHINGTON • OREGON
ALASKA • IDAHO • MONTANA
888.690.0090