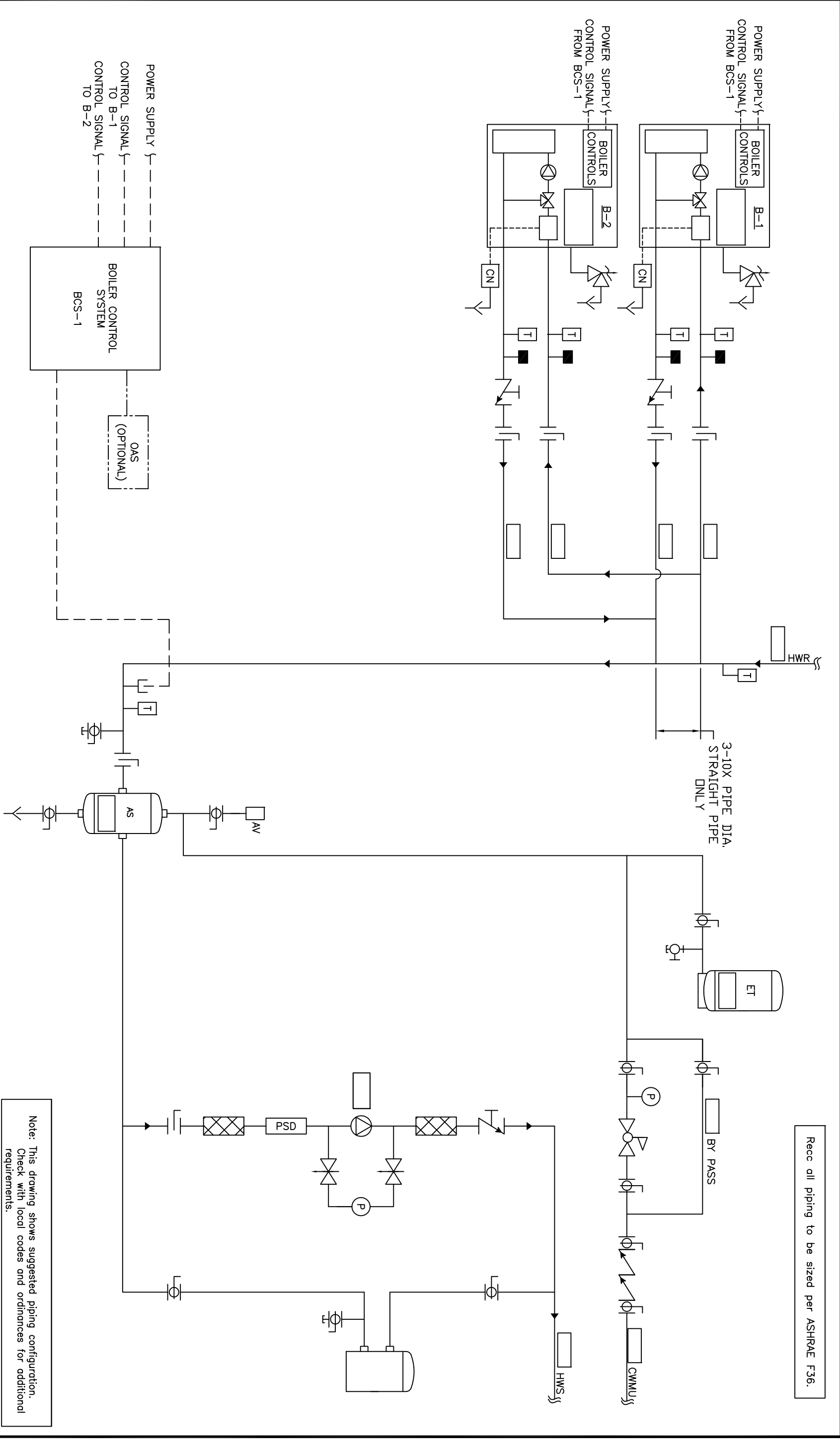


Rec all piping to be sized per ASHRAE F36.



Note: This drawing shows suggested piping configuration. Check with local codes and ordinances for additional requirements.

REV		DESCRIPTION		DATE		BY	
A	RELEASED			RSG 05/28/08			
<p>THIS DRAWING AND THE INFORMATION PERMITTED HEREIN IS THE PROPERTY OF CHC. CALIFORNIA HYDRONICS CORP. COPIES ARE ISSUED IN STRICT CONFIDENCE AND SHALL NOT BE REPRODUCED OR COPIED, OR USED AS INSTALLATION OR SALE OF PRODUCT WITHOUT PRIOR WRITTEN PERMISSION OF CHC.</p>							
PROJECT NAME:				DRAWING TITLE:			
PROJECT LOCATION:				HYDRONIC PRIMARY/SECONDARY - 2 ECONOMIZER CONDENSING BOILERS, BUILT IN TEMP PROTECTION WITH SYSTEM PUMP			
ENGINEER:				DRAWN BY/DATE:			
CUSTOMER:				CHECKED/DATE:			
				APPROVED/DATE:			
				SCALE:			
				SIZE:			
				ANGLE:			
				500"			
				D			
				S			
				D			
				A			
				REV			
				A			

