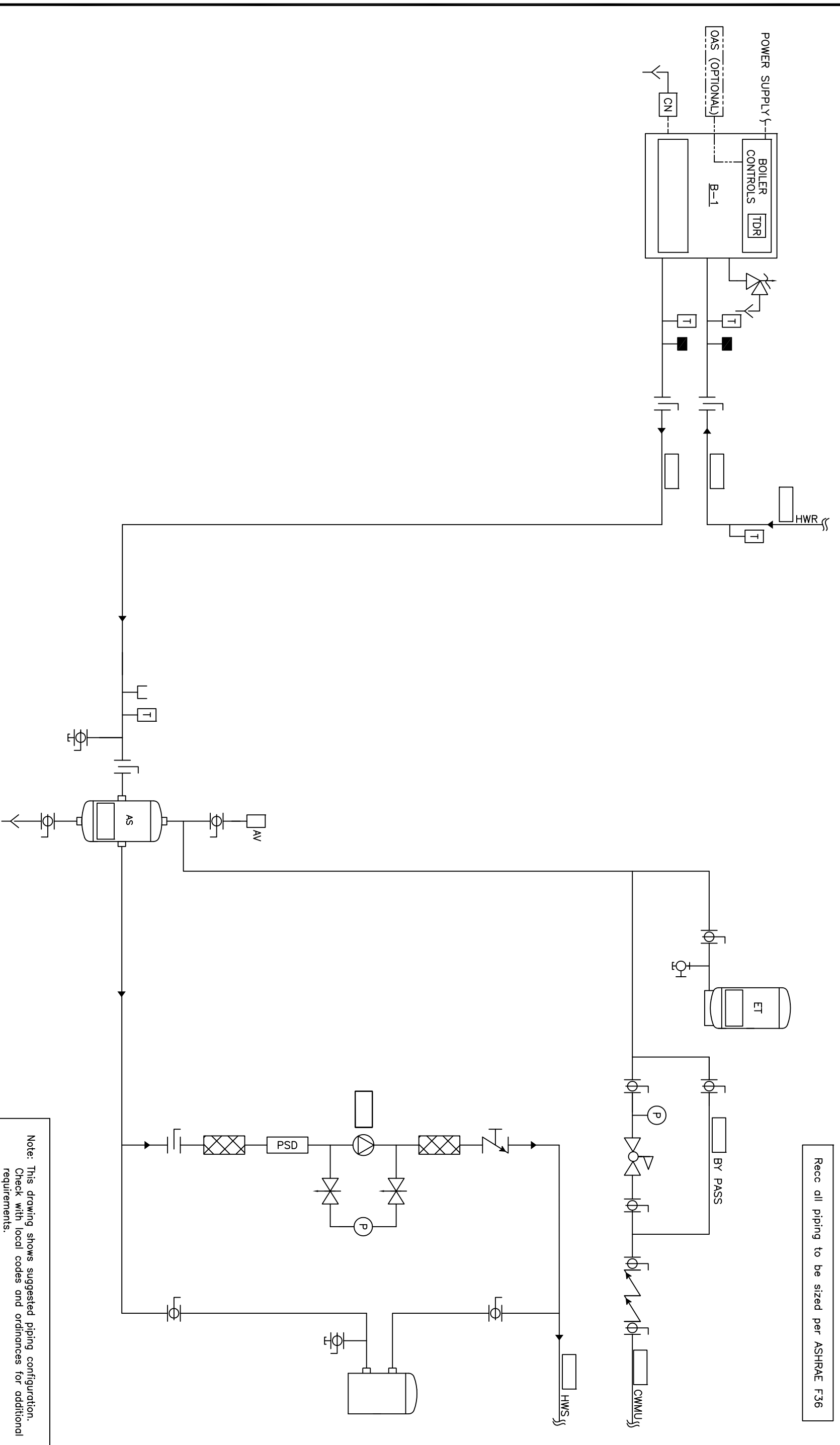


Recc all piping to be sized per ASHRAE F36



Note: This drawing shows suggested piping configuration. Check with local codes and ordinances for additional requirements.

<p>THIS DRAWING AND THE INFORMATION OF DEPICTED THEREIN IS THE PROPERTY OF CHC, CALIFORNIA HYDRONICS CORP., AND SHALL NOT BE REPRODUCED OR USED AS THE BASIS FOR THE MANUFACTURING, INSTALLATION OR SALE OF PRODUCT WITHOUT WRITTEN PERMISSION OF CHC.</p>	
PROJECT NAME:	HYDRONIC VARIABLE VOLUME PRIMARY SYSTEM - FULLY
PROJECT LOCATION:	CONDENSING BOILER, BUILT IN TEMP PROTECTION WITH
ENGINEER:	SYSTEM PUMP
CUSTOMER:	
DRAWING No.	H-VP-400-1BI-1
DATE	5/23/08
BY	D.K
REV	A
DESCRIPTION	RELEASED



CHC

CALIFORNIA • RENO
 800.486.4858
 WASHINGTON • OREGON
 ALASKA • IDAHO • MONTANA
 888.690.0090