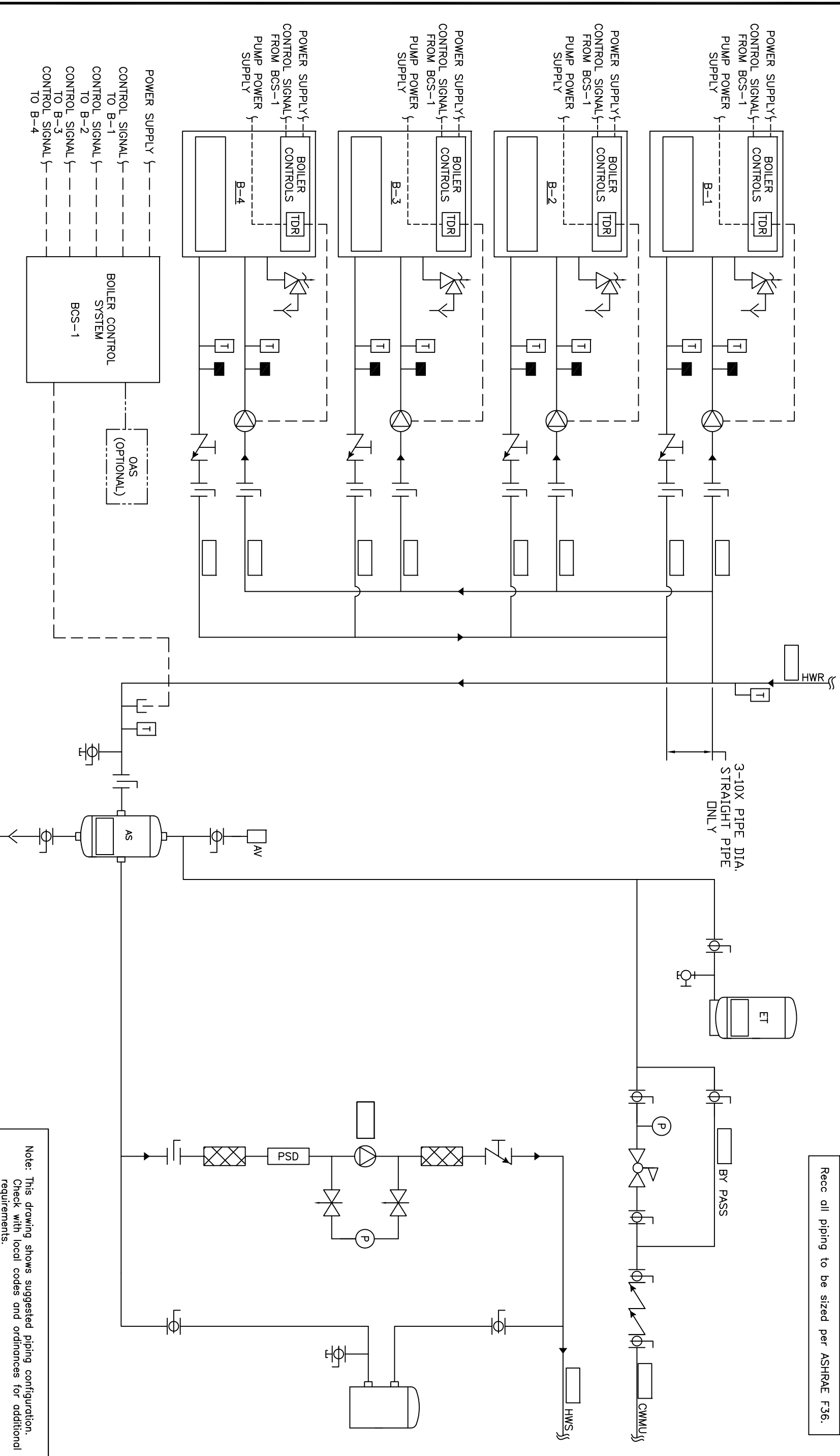


Recs all piping to be sized per ASHRAE F36.



Note: This drawing shows suggested piping configuration. Check with local codes and ordinances for additional requirements.

<p>THIS DRAWING AND THE INFORMATION DEPICTED THEREIN IS THE PROPERTY OF CHC, CALIFORNIA HYDRONICS CORP., AND IS NOT TO BE REPRODUCED OR USED AS THE BASIS FOR THE MANUFACTURING, INSTALLATION OR SALE OF PRODUCT WITHOUT WRITTEN PERMISSION OF CHC.</p>	
<p>PROJECT NAME:</p>	<p>HYDRONIC PRIMARY/SECONDARY - ASEALD COMBUSTION BOILERS, SEPARATE PUMP POWER, NO TEMP PROTECTION, WITH SYSTEM PUMP</p>
<p>PROJECT LOCATION:</p>	<p>DRAWING No. H-PS-201-4XX-1</p>
<p>ENGINEER:</p>	<p>PROJECT BRIDGE</p>
<p>DATE</p>	<p>05/23/08</p>
<p>BY</p>	<p>RSRG 05/28/08</p>
<p>DESCRIPTION</p>	<p>TOLERANCES UNLESS OTHERWISE SPECIFIED: SIZE D, SCALE 1/8" = 1'-0"</p>
<p>REV</p>	<p>A</p>
<p>RELEASED</p>	<p>WASHINGTON • IDAHO • OREGON 888.690.0090</p>

