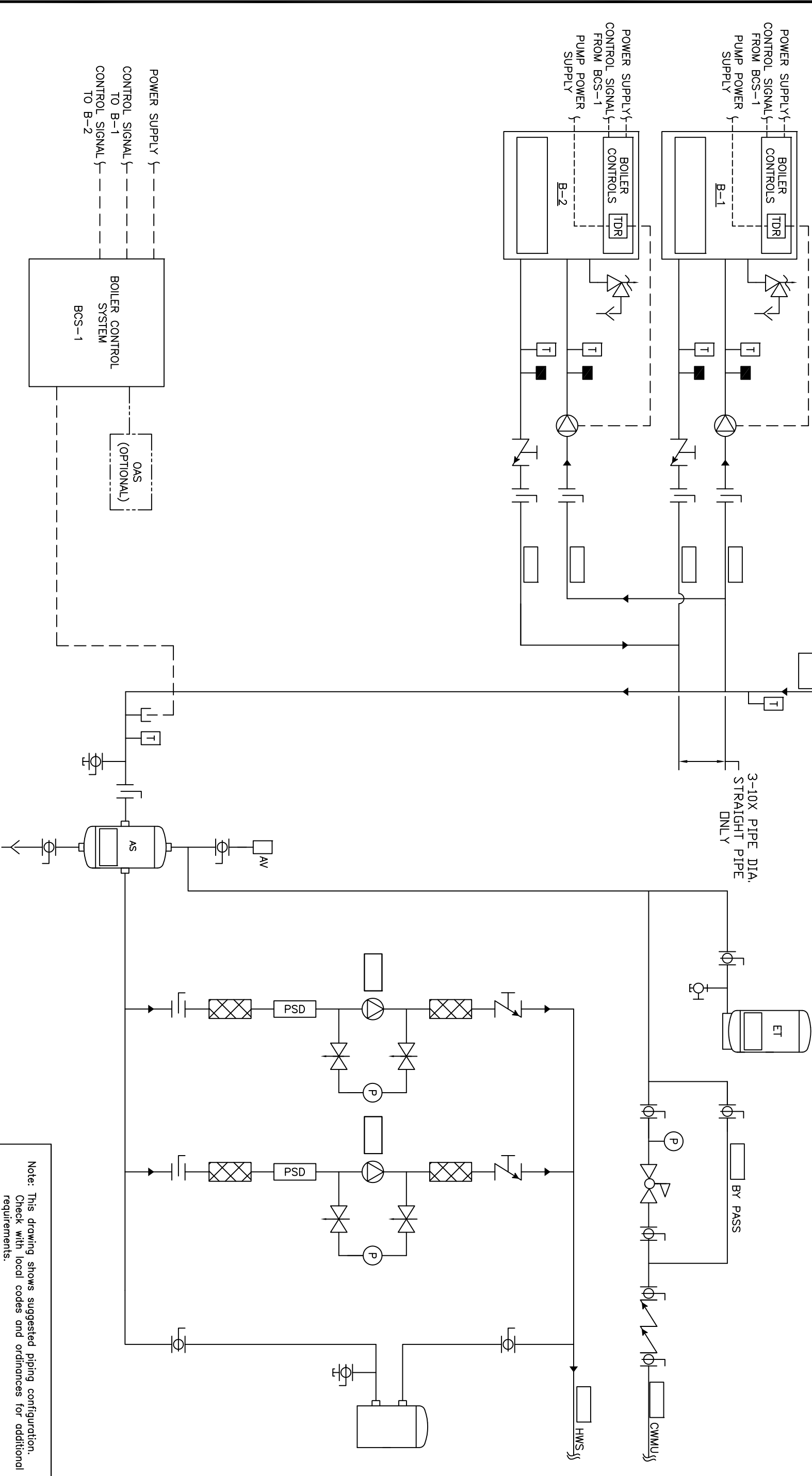


Recc all piping to be sized per ASHRAE F36.



Note: This drawing shows suggested piping configuration. Check with local codes and ordinances for additional requirements.

					THIS DRAWING AND THE INFORMATION DEPICTED THEREIN IS THE PROPERTY OF FLUORMAID SYSTEMS, A DIVISION OF CALIFORNIA HYDRONICS CORP., AND IS NOT TO BE REPRODUCED OR CONFIDENCE AND SHALL NOT BE REPRODUCED OR COPIED, OR USED AS THE BASIS FOR THE INSTALLATION OR INSTALLATION OR SALE OF PRODUCT, WITHOUT PRIOR WRITTEN PERMISSION OF CHC.									
					PROJECT NAME:									
					PROJECT LOCATION:									
					ENGINEER:									
					DRAWING No.									
A	RELEASED			RSG 05/28/08	H-PS-201-2XX-2									
					TOLERANCES UNLESS OTHERWISE SPECIFIED									
					DRAWN BY/DATE									
					CHECKED									
					APPROVED									
					DATE									
					SIZE									
					D									
					SCALE									
					1/8"									
					REV									
					A									
					CALIFORNIA • RENO									
					800.486.4858									
					WASHINGTON • OREGON									
					ALASKA • IDAHO • MONTANA									
					888.690.0090									