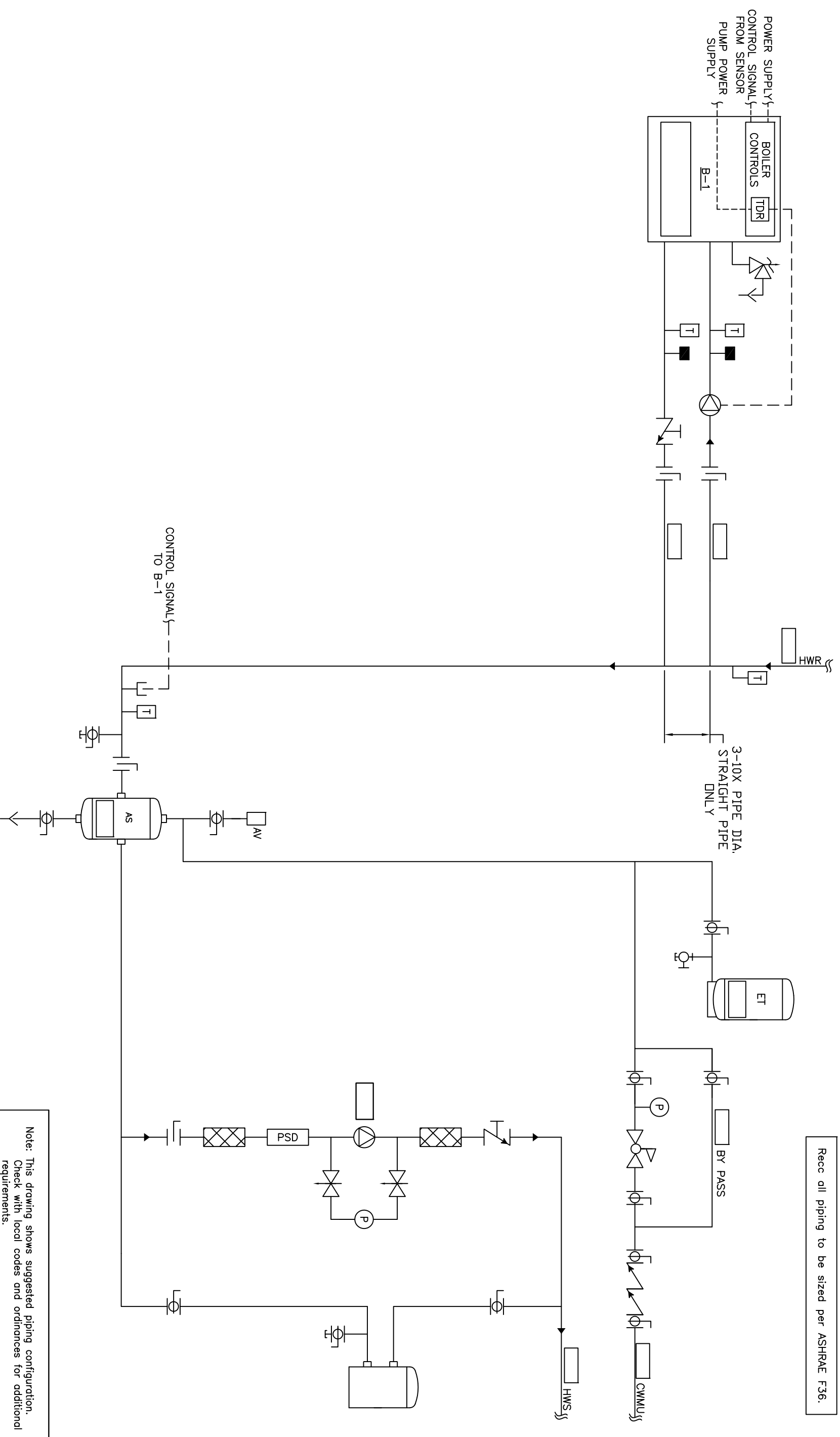


Recc all piping to be sized per ASHRAE F36.



Note: This drawing shows suggested piping configuration. Check with local codes and ordinances for additional requirements.

PROJECT NAME:		THIS DRAWING AND THE INFORMATION DEPICTED THEREIN IS THE PROPERTY OF CHC. ALL RIGHTS ARE RESERVED. NO PARTS OF THIS DRAWING OR INFORMATION DEPICTED HEREIN ARE TO BE REPRODUCED OR TRANSMITTED IN ANY FORM OR BY ANY MEANS, ELECTRONIC OR MECHANICAL, WITHOUT PRIOR WRITTEN PERMISSION OF CHC.	
PROJECT LOCATION:		DRAWING TITLE: HYDRONIC PRIMARY/SECONDARY - SEALED COMBUSTION BOILER, SEPARATE PRIMARY PUMP POWER, NO TEMP PROTECTION, WITH SYSTEM PUMP	
ENGINEER:		DRAWING No. H-PS-201-1XX-1	
CUSTOMER:		DRAWN BY/DATE: BRYANNE DIX/05/23/08 CHECKED BY/DATE: [blank]/[blank] DESIGNED BY/DATE: [blank]/[blank] SCALE: 500" = 1'-0" SHEET: 5 OF 5	
REV	DESCRIPTION	BY	DATE
A	RELEASED	RSG	05/28/08

