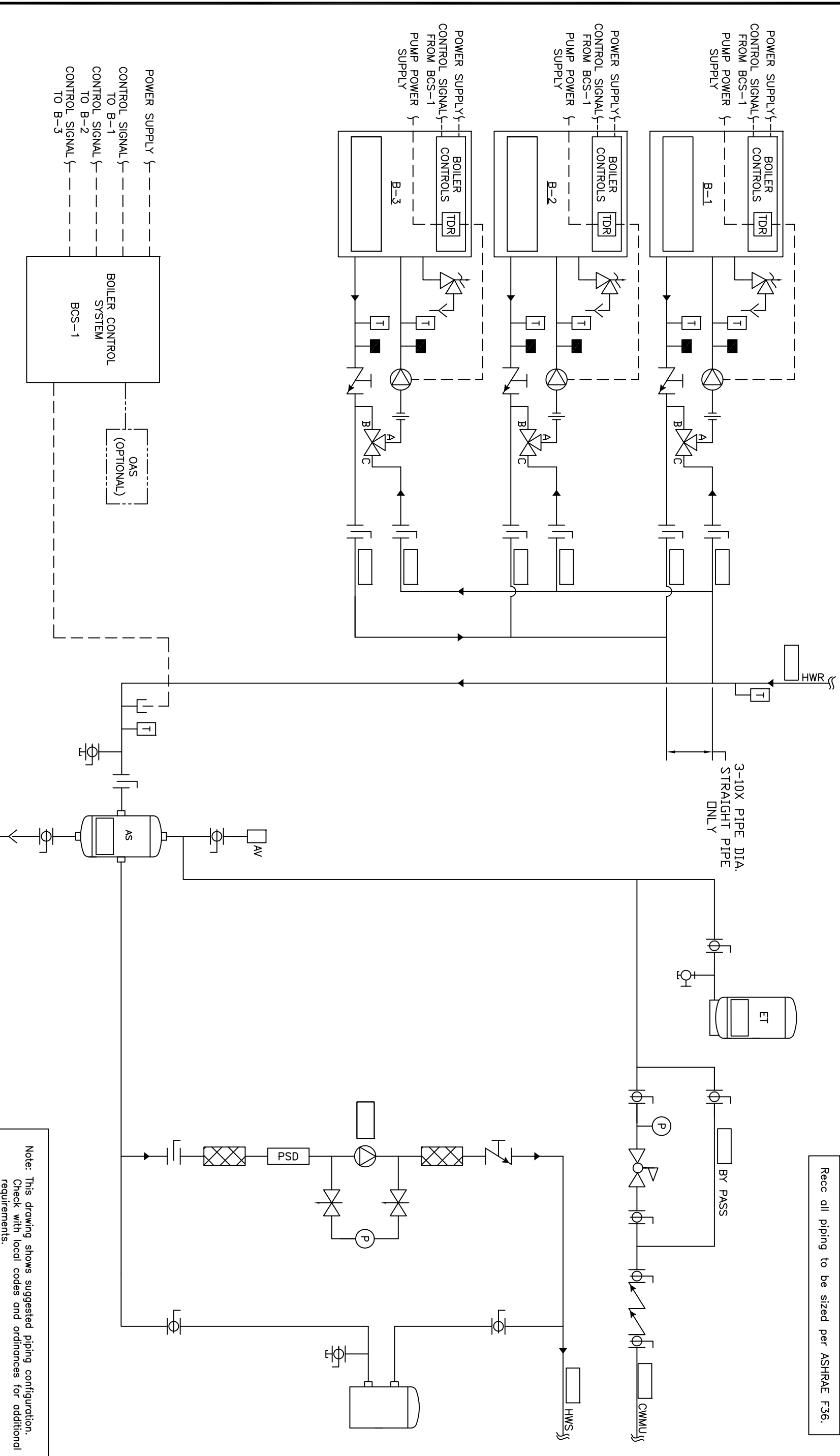


Rec'd all piping to be sized per ASHRAE F36.



Note: This drawing shows suggested piping configuration. Check with local codes and ordinances for additional requirements.

<p>THIS DRAWING AND THE INFORMATION DEPICTED THEREIN IS THE PROPERTY OF CHC, CALIFORNIA HYDRONICS CORP., AND IS TO BE USED ONLY FOR THE PROJECT AND SITE SPECIFICALLY IDENTIFIED HEREIN. IT IS NOT TO BE REPRODUCED OR COPIED, OR USED AS THE BASIS FOR THE MANUFACTURING, INSTALLATION OR SALE OF PRODUCT OR SERVICE WITHOUT THE WRITTEN PERMISSION OF CHC.</p>	
<p>PROJECT NAME:</p>	<p>HYDRONIC PRIMARY/SECONDARY - 3 SEALED COMBUSTION BOILERS, INDIVIDUAL FPE VALVE, WITH SEPARATE PRIMARY PUMP POWER AND SYSTEM PUMP</p>
<p>PROJECT LOCATION:</p>	<p>H-1-PS-201-3IF-1</p>
<p>ENGINEER:</p>	<p>RSG 05/28/08</p>
<p>CUSTOMER:</p>	<p>BY DATE</p>
<p>REV</p>	<p>DESCRIPTION</p>
<p>A</p>	<p>RELEASED</p>

