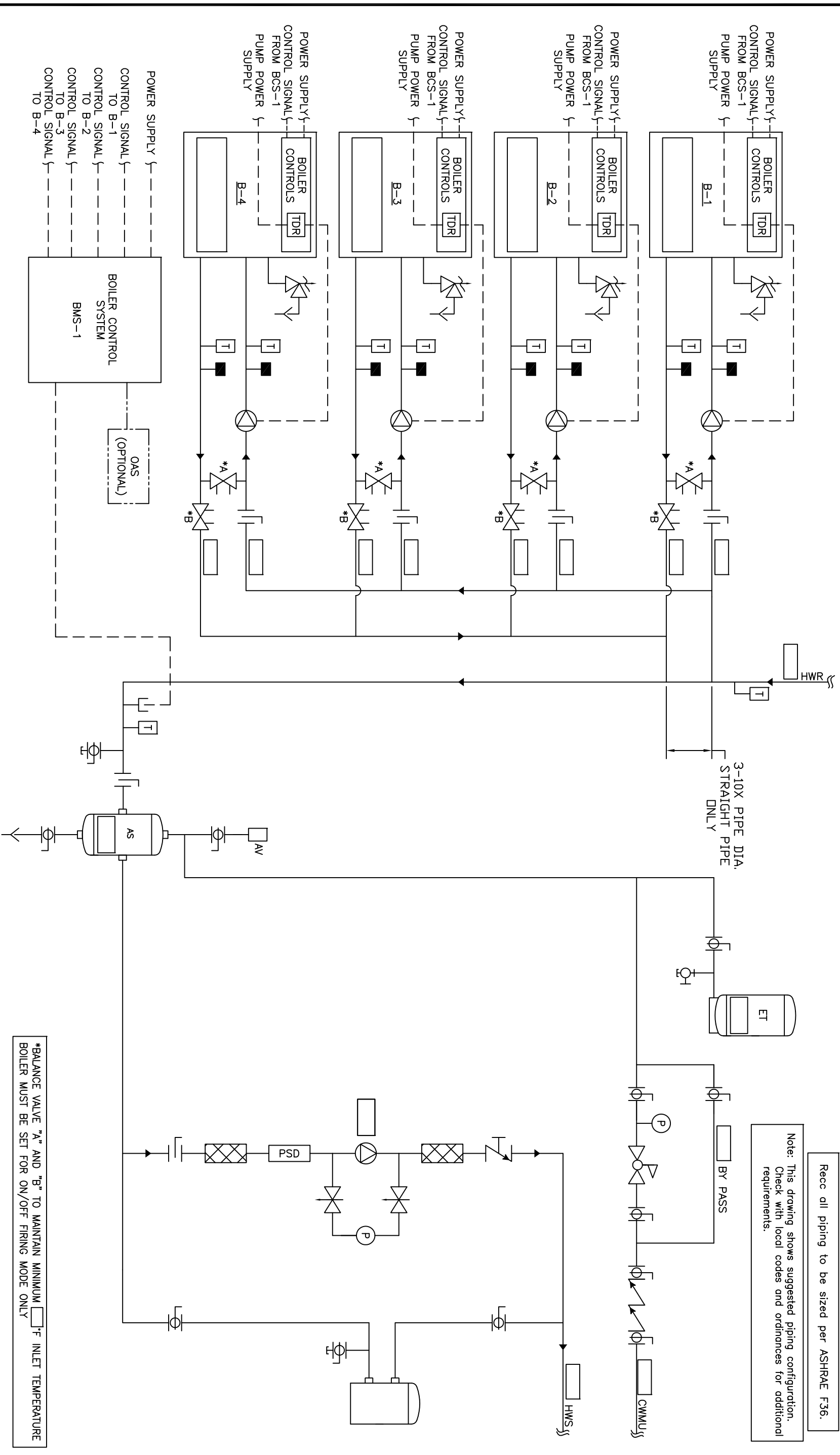


Recc all piping to be sized per ASHRAE F36.

Note: This drawing shows suggested piping configuration.
Check with local codes and ordinances for additional requirements.



THIS DRAWING AND THE INFORMATION DEPICTED THEREIN IS THE PROPERTY OF CHC, CALIFORNIA HYDRAONICS CORP., AND IS NOT TO BE REPRODUCED OR USED AS THE BASIS FOR THE MANUFACTURING, INSTALLATION OR SALE OF PRODUCT WITHOUT WRITTEN PERMISSION OF CHC.		PROJECT NAME:		DRAWING TITLE:	
PROJECT LOCATION:		ENGINEER:		HYDRONIC, PRIMARY/SECONDARY - 4 SEALED COMBUSTION BOILERS WITH SEPARATE PRIMARY PUMP POWER, CIRCUIT SETLER PROTECTION, WITH SYSTEM PUMP	
RSG 05/28/08		DATE		H-PS-201-4CS-1	
BY		DESCRIPTION		TOLERANCES UNLESS OTHERWISE SPECIFIED: ANGLES 300° SIZE D SCALE 1/8"=1'-0"	
REV		A		REV A	
RELEASED		DESCRIPTION		CALIFORNIA • RENO 800.486.4858 WASHINGTON • OREGON ALASKA • IDAHO • MONTANA 888.690.0090	