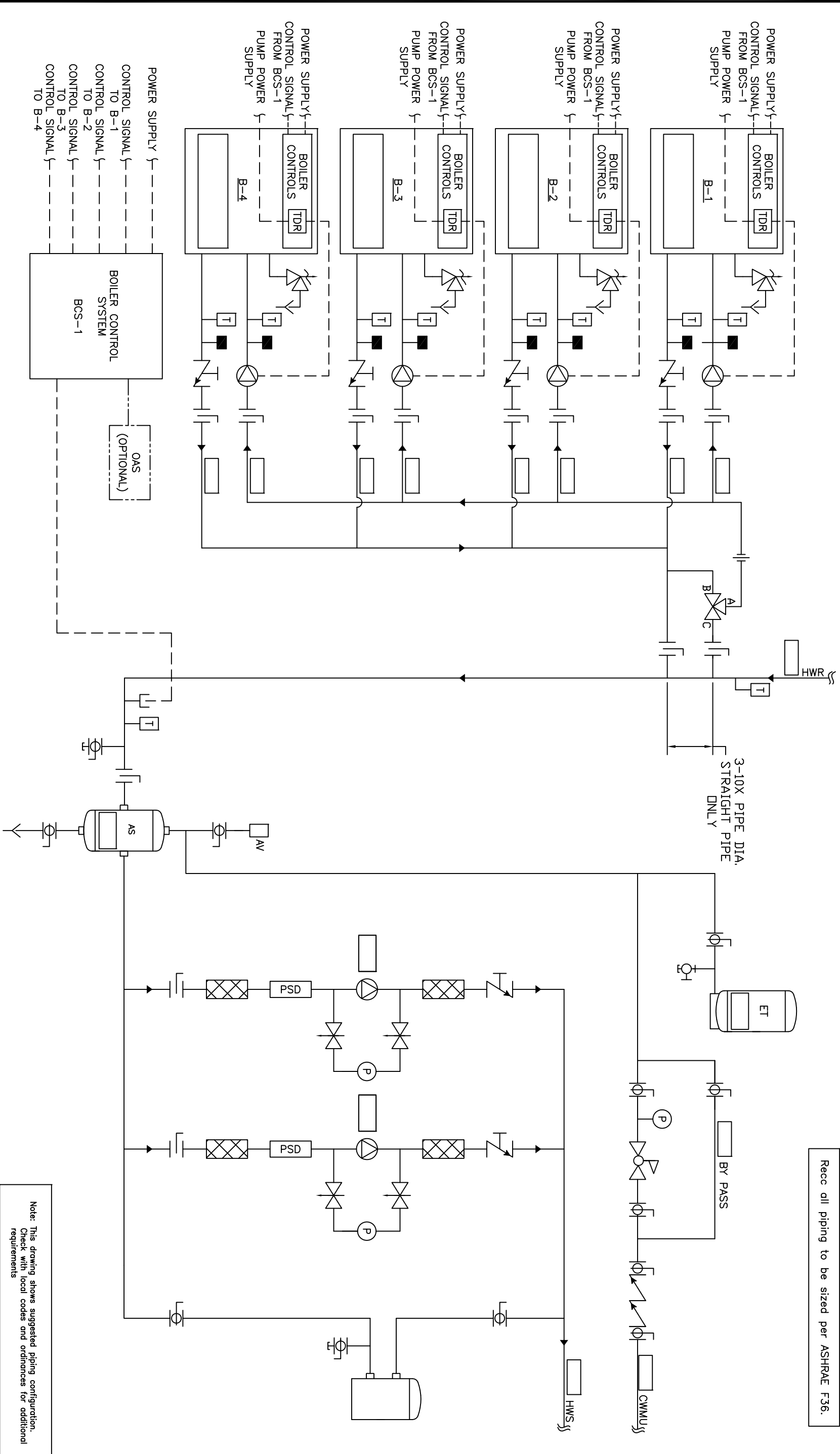


Recc all piping to be sized per ASHRAE F36.



Note: This drawing shows suggested piping configuration.
Check with local codes and ordinances for additional requirements

THIS DRAWING AND THE INFORMATION CONTAINED HEREIN ARE THE PROPERTY OF CHC, CALIFORNIA HYDRONICS CORP. COPIES ARE ISSUED IN STRICT CONFERENCE AND SHALL NOT BE REPRODUCED OR TRANSMITTED IN ANY FORM OR BY ANY MEANS, ELECTRONIC OR MECHANICAL, INCLUDING PHOTOCOPYING, RECORDING, OR BY ANY INFORMATION STORAGE AND RETRIEVAL SYSTEM, WITHOUT PRIOR WRITTEN PERMISSION OF CHC.		PROJECT NAME:		DRAWING TITLE:	
PROJECT LOCATION:		HYDROIC PRIMARY/SECONDARY - 4 SEALED COMBUSTION BOILERS WITH SEPARATE PRIMARY PUMP POWER, COMMON FPE VALVE, WITH 2 SYSTEM PUMPS		REV	
ENGINEER:		DRAWING No.		A	
CUSTOMER:		H-PS-201-4CF-2		TOLERANCES UNLESS OTHERWISE SPECIFIED	
BY		DATE		300"	
DESCRIPTION		D.K.		5"	
REV		DATE		0	
A		RELEASED		RSG 05/28/08	



CHC

CALIFORNIA • RENO
800.486.4858
WASHINGTON • OREGON
ALASKA • IDAHO • MONTANA
888.690.0090