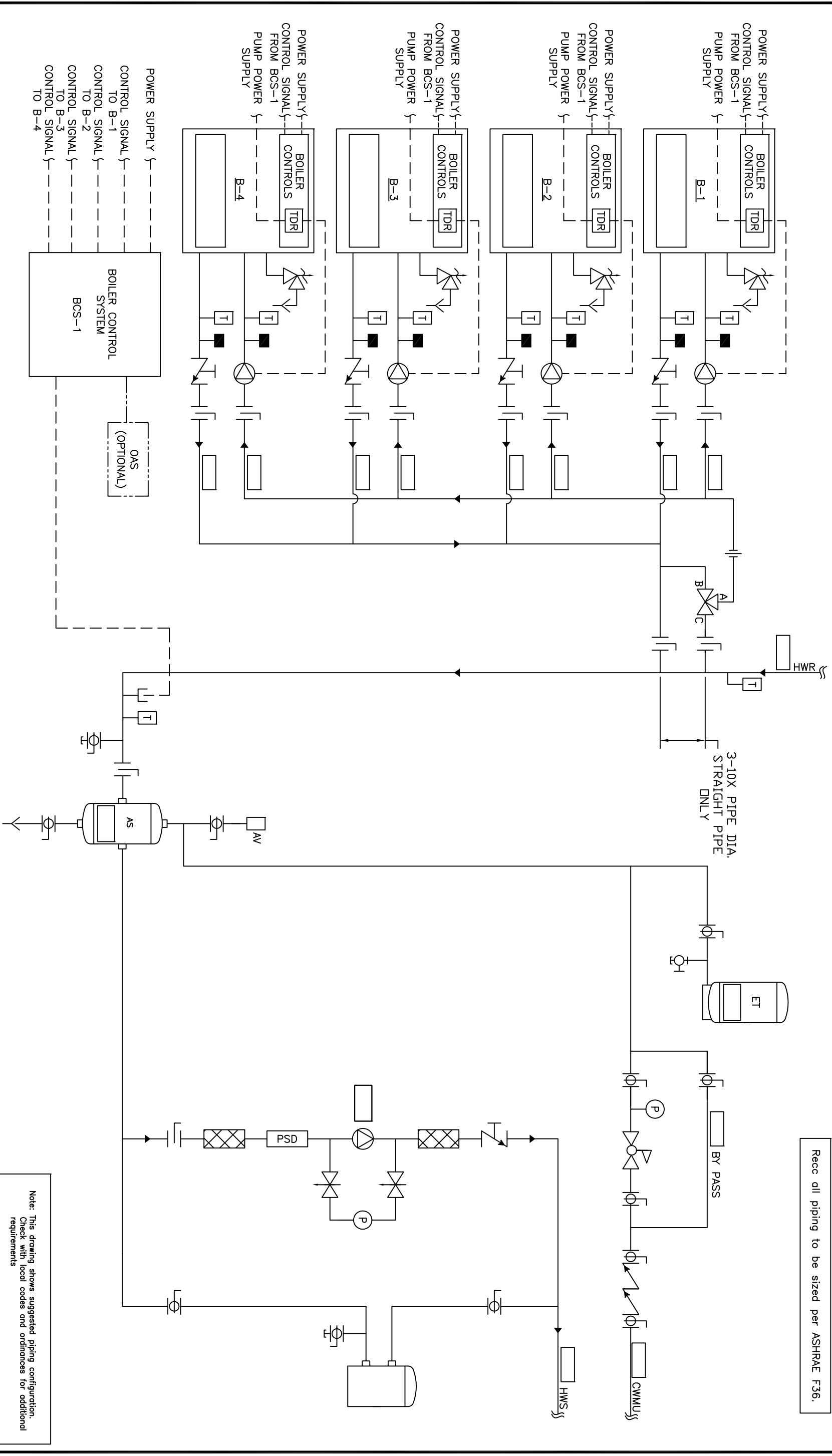





Recc all piping to be sized per ASHRAE F36.



					THIS DRAWING AND THE INFORMATION DEPICTED THEREIN IS THE PROPERTY OF PLUMBING INDUSTRIES, A DIVISION OF CHC, CALIFORNIA HYDRAONICS CORP., COPIES ARE ISSUED IN STRICT CONFIDENCE AND SHALL NOT BE REPRODUCED OR COPIED, OR USED AS THE BASIS FOR THE MANUFACTURING, INSTALLATION OR SALE OF PRODUCT, WITHOUT PRIOR WRITTEN PERMISSION OF CHC.									
					PROJECT NAME:									
					DRAWING TITLE:									
					PROJECT LOCATION:									
					HYDRAONIC PRIMARY/SECONDARY - 4 SEALED COMBUSTION BOILERS WITH SEPARATE PRIMARY PUMP POWER, COMMON FPE VALVE, WITH SYSTEM PUMP									
					ENGINEER:									
					DRAWING No.									
					H-PS-201-4CF-1									
					TOLERANCES UNLESS OTHERWISE SPECIFIED									
					DEC. 500"									
					D.K. 05/23/08									
					DRAIN BY/DWG. D.K. 05/23/08									
					CHECKED									
					APPROVED									
					DEC. 500"									
					ANGLE 5°									
					SIZE 0									
					SCALE NTS									
					REV A									
					CUSTOMER:									
					DESCRIPTION									
					BY									
					DATE									
					RSG 05/28/08									
					THE BASIS FOR THE MANUFACTURING, INSTALLATION OR SALE OF PRODUCT, WITHOUT PRIOR WRITTEN PERMISSION OF CHC.									
					RELEASED									
					A									
					REV									





CALIFORNIA • RENO
800.486.4858
WASHINGTON • OREGON
ALASKA • IDAHO • MONTANA
888.690.0090