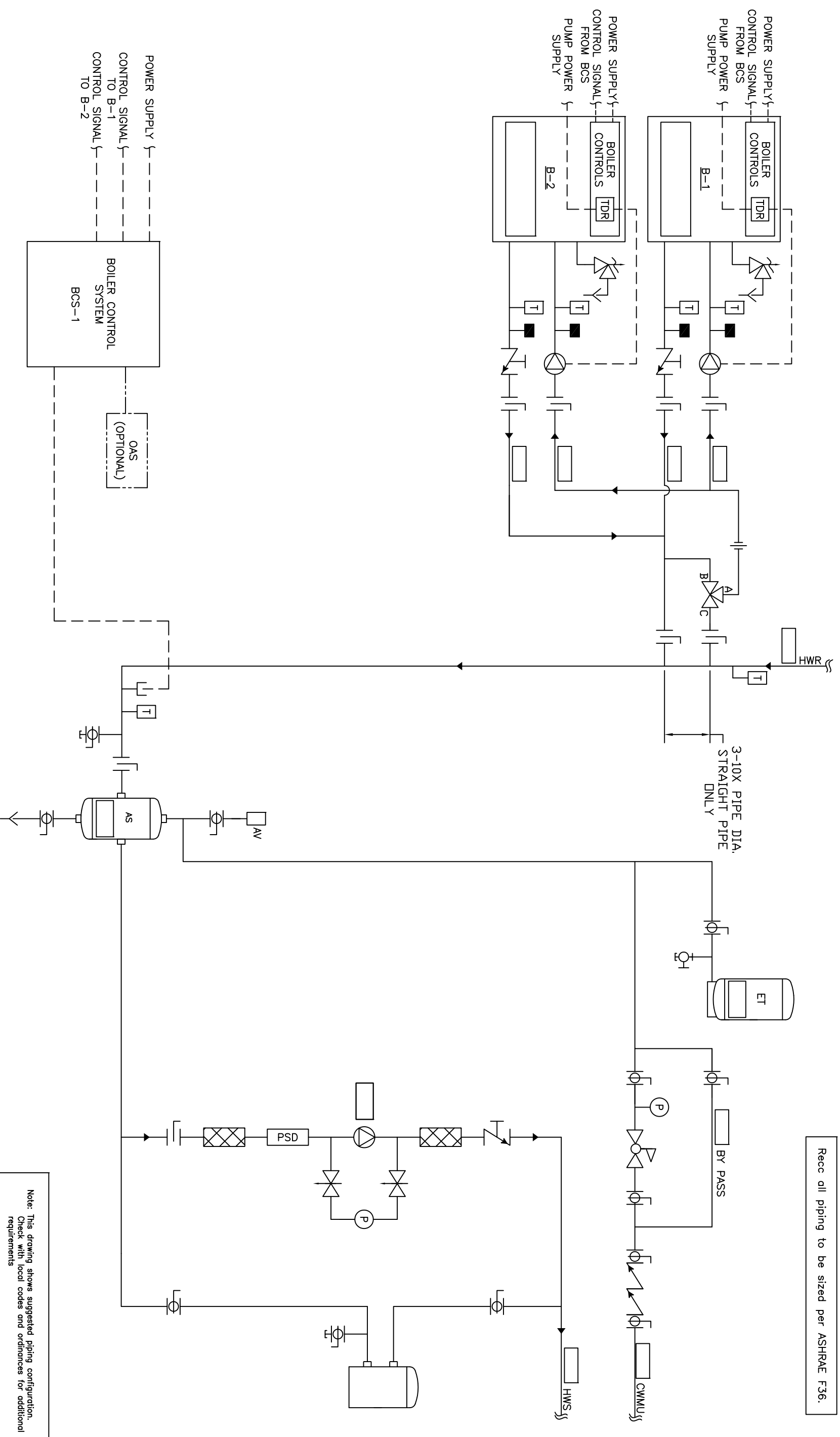


Recc all piping to be sized per ASHRAE F36.



Note: This drawing shows suggested piping configuration. Check with local codes and ordinances for additional requirements

REV		DESCRIPTION	BY	DATE	<p>THIS DRAWING AND THE INFORMATION DEPICTED THEREIN IS THE PROPERTY OF CHC. A DIVISION OF FLORENCE SYSTEMS. ALL RIGHTS RESERVED. COPIES ARE ISSUED IN STRICT CONFIDENCE AND SHALL NOT BE REPRODUCED OR USED AS THE BASIS FOR THE MANUFACTURING, WITHOUT PRIOR WRITTEN PERMISSION OF CHC.</p>	<p>PROJECT NAME: PROJECT LOCATION: ENGINEER: CUSTOMER:</p>	<p>DRAWING TITLE: DRAWING No. H-PS-201-2CF-1</p>	<p>HYDRONIC PRIMARY/SECONDARY - 2 SEALED COMBUSTION BOILERS WITH SEPARATE PRIMARY PUMP POWER, COMMON FPE VALVE, WITH SYSTEM PUMP</p>	<p>SCALE: 5/8" = 1'-0"</p>	<p>REV A</p>	<p>CHC CALIFORNIA • RENO WASHINGTON • OREGON ALASKA • IDAHO • MONTANA 888.690.0090</p>
A	RELEASED	RSG 05/28/08									