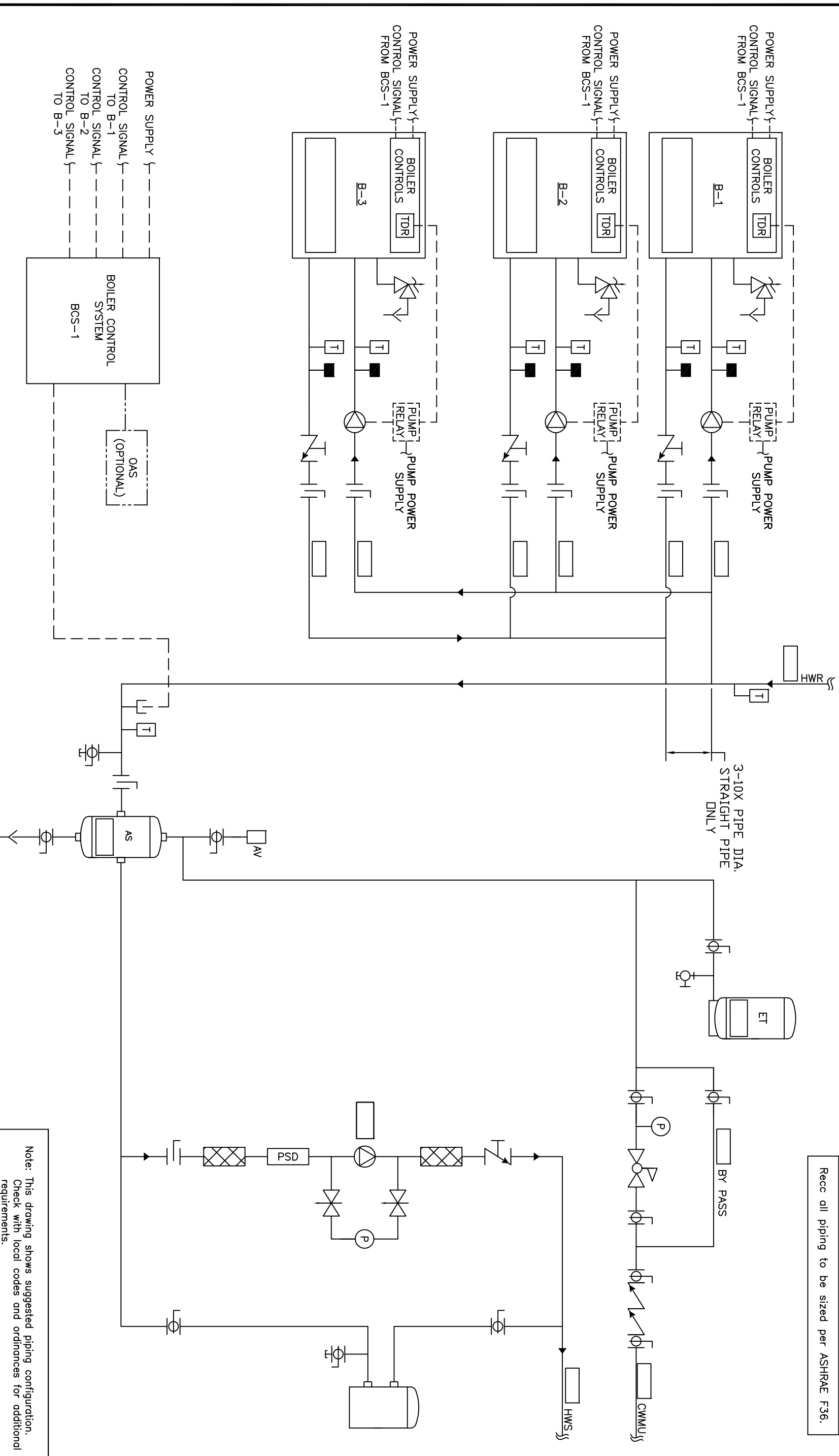


Rec'd all piping to be sized per ASHRAE F36.



<p>THIS DRAWING AND THE INFORMATION DEPICTED THEREIN IS THE PROPERTY OF CHC, CALIFORNIA HYDRONICS CORP., AND IS NOT TO BE REPRODUCED OR USED AS THE BASIS FOR THE MANUFACTURING, INSTALLATION OR SALE OF PRODUCT WITHOUT WRITTEN PERMISSION OF CHC.</p>		<p>PROJECT NAME: _____</p>	
<p>PROJECT LOCATION: _____</p>		<p>DRAWING TITLE: HYDRONIC PRIMARY/SECONDARY - 3 SEALED COMBUSTION BOILERS, NO TEMP PROTECTION, WITH EXTERNAL PRIMARY PUMP STARTER AND SYSTEM PUMP</p>	
<p>ENGINEER: RSG 05/28/08</p>		<p>DRAWING No. H-PS-202-3XX-1</p>	
<p>BY: _____</p>		<p>DATE: 05/23/08</p>	
<p>DESCRIPTION: _____</p>		<p>TOOLERANGES UNLESS OTHERWISE SPECIFIED: SIZE D, SCALE ANS</p>	
<p>REV A RELEASED</p>		<p>REV A</p>	

