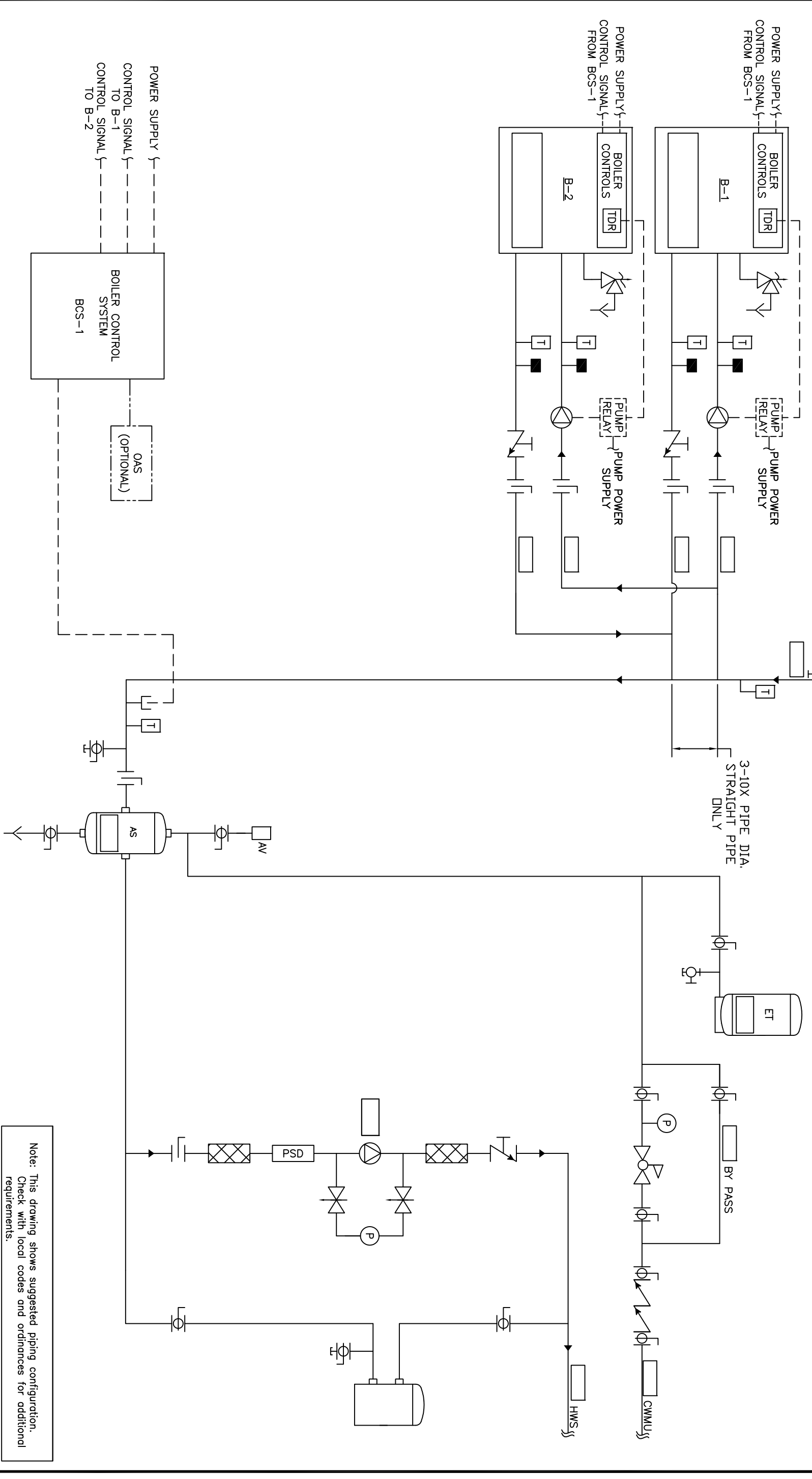


Rec all piping to be sized per ASHRAE F36.



Note: This drawing shows suggested piping configuration. Check with local codes and ordinances for additional requirements.

PROJECT NAME:		THIS DRAWING AND THE INFORMATION CONTAINED HEREIN IS THE PROPERTY OF CHC. CALIFORNIA HYDRAONICS CORP. COPIES ARE ISSUED IN STRICT CONFIDENCE AND SHALL NOT BE REPRODUCED OR COPIED, OR USED AS INSTALLATION OR SALE OF PRODUCT WITHOUT PRIOR WRITTEN PERMISSION OF CHC.		DRAWING TITLE:	
PROJECT LOCATION:		ENGINEER:		HYDRONIC PRIMARY/SECONDARY - 2 SEALED COMBUSTION BOILERS, NO TEMP PROTECTION, WITH EXTERNAL PRIMARY PUMP STARTER AND SYSTEM PUMP	
CUSTOMER:		DRAWN BY/DATE:		CHECKED/DATE:	
BY:		DATE:		TOLERANCES UNLESS OTHERWISE SPECIFIED:	
DESCRIPTION:		RSG 05/28/08		ANGLE 5°	
REV A		RELEASED		SIZE D	
				SCALE NTS	

