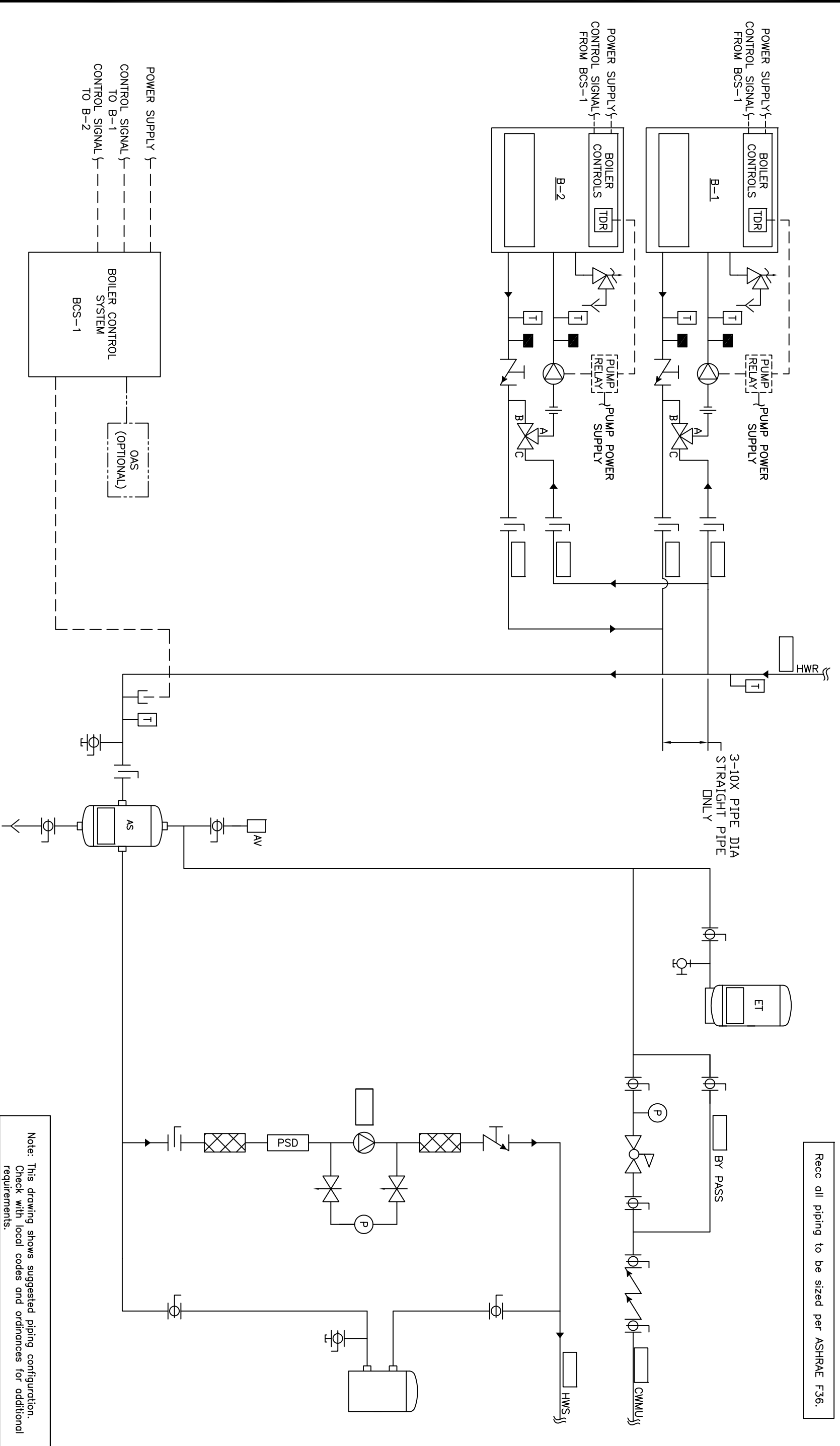


Rec all piping to be sized per ASHRAE F36.



Note: This drawing shows suggested piping configuration. Check with local codes and ordinances for additional requirements.

<p>THIS DRAWING AND THE INFORMATION CONTAINED HEREIN ARE THE PROPERTY OF CHC, CALIFORNIA HYDRONICS CORP. NO PARTS OF THIS DRAWING OR INFORMATION CONTAINED HEREIN ARE TO BE REPRODUCED OR TRANSMITTED IN ANY FORM OR BY ANY MEANS, WITHOUT PRIOR WRITTEN PERMISSION OF CHC.</p>		<p>PROJECT NAME: HYDRONIC PRIMARY/SECONDARY - 2 SEALED COMBUSTION BOILERS, INDIVIDUAL FPE VALVE, WITH EXTERNAL PRIMARY PUMP STARTER AND SYSTEM PUMP</p>	
<p>PROJECT LOCATION: ENGINEER: CUSTOMER:</p>		<p>DRAWING No. H-PS-202-21F-1</p>	
<p>REV A RELEASED</p>		<p>REV A TOLERANCES UNLESS OTHERWISE SPECIFIED 500" 5" 0" SCALE NTS</p>	
<p>DESCRIPTION</p>		<p>DRAWN BY/DATE D.K. 05/29/08</p>	
<p>DATE</p>		<p>CHECKED/DATE APPROVED/DEC.</p>	