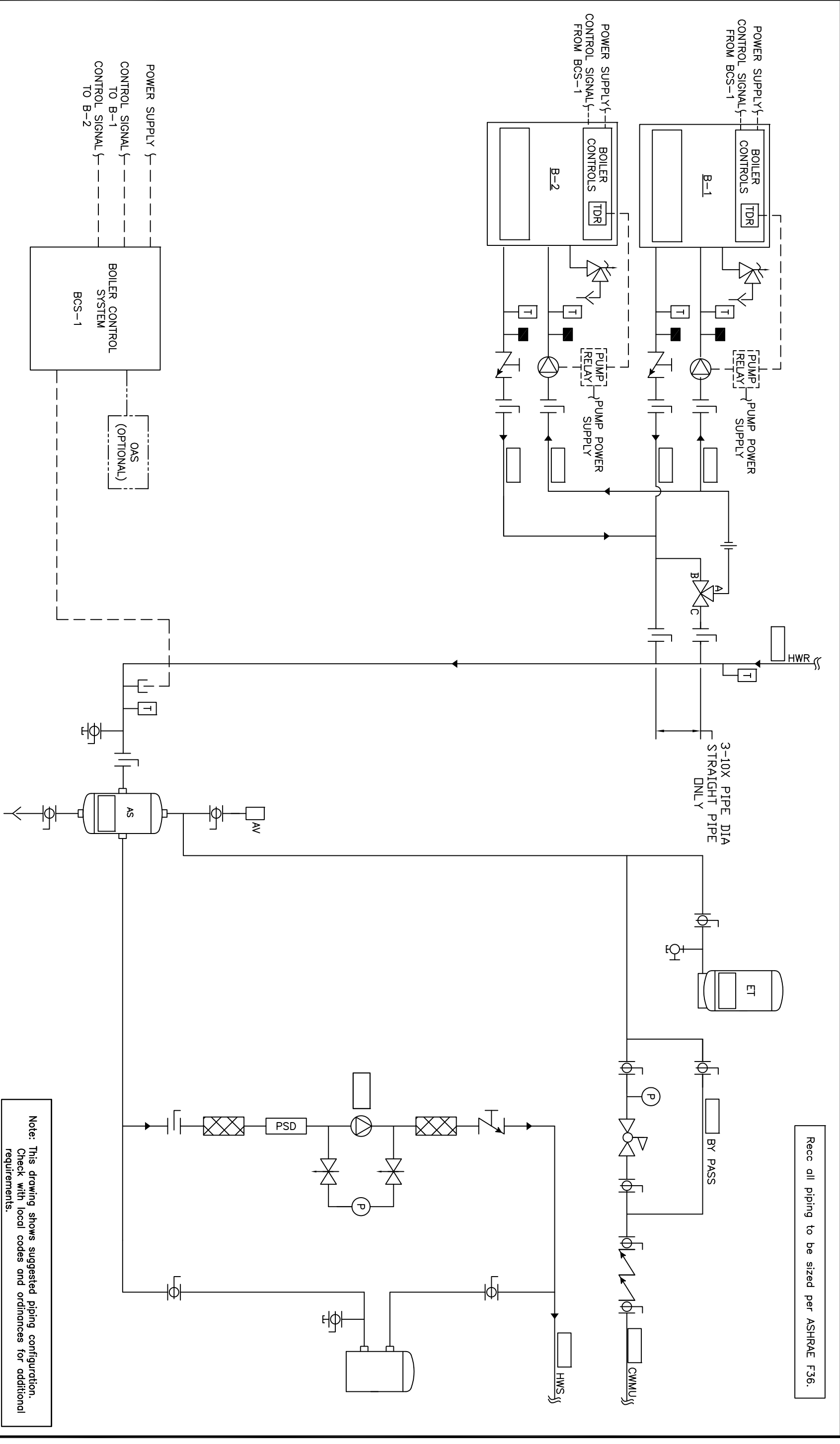


Recc all piping to be sized per ASHRAE F36.



Note: This drawing shows suggested piping configuration. Check with local codes and ordinances for additional requirements.

REV		DESCRIPTION		DATE		BY	
A		RELEASED		RSG 05/28/08			
<p>THIS DRAWING AND THE INFORMATION HEREIN IS THE PROPERTY OF CHC. CALIFORNIA HYDRAONICS CORP. COPIES ARE ISSUED IN STRICT CONFIDENCE AND SHALL NOT BE REPRODUCED OR COPIED, OR USED AS INSTALLATION OR SALE OF PRODUCT WITHOUT PRIOR WRITTEN PERMISSION OF CHC.</p>							
PROJECT NAME:				DRAWING TITLE:			
PROJECT LOCATION:				HYDRONIC PRIMARY/SECONDARY - 2 SEALED COMBUSTION BOILERS, COMMON FPE VALVE WITH EXTERNAL PRIMARY PUMP STARTER AND SYSTEM PUMP			
ENGINEER:				DRAWN BY/DATE:			
CUSTOMER:				H-PS-202-2CF-1 05/23/08			
CHECKED/DATE:				TOLERANCES UNLESS OTHERWISE SPECIFIED			
APPROVED/DATE:				ANGLE 5°			
SCALE:				SIZE D			
REV A				SCALE NTS			
				<p>CALIFORNIA • RENO 800.486.4858 WASHINGTON • OREGON ALASKA • IDAHO • MONTANA 888.690.0090</p>			