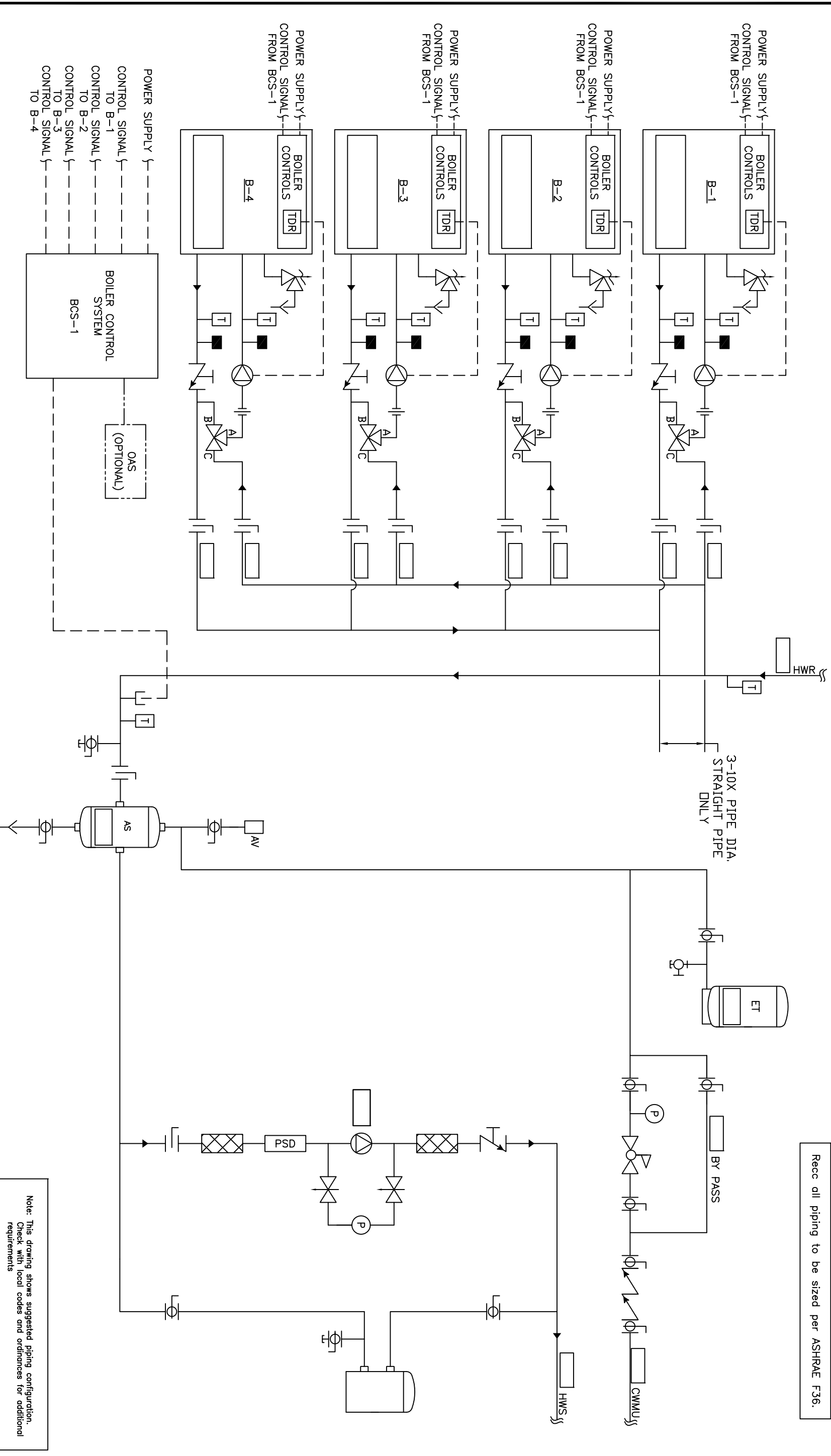


Recall all piping to be sized per ASHRAE F36.



<p>THIS DRAWING AND THE INFORMATION DEPICTED THEREIN IS THE PROPERTY OF CHC, CALIFORNIA HYDRONICS CORP., AND IS UNLAWFULLY TO BE REPRODUCED OR USED AS THE BASIS FOR THE MANUFACTURING, INSTALLATION OR SALE OF PRODUCT WITHOUT WRITTEN PERMISSION OF CHC.</p>		<p>PROJECT NAME:</p>	
<p>PROJECT LOCATION:</p>		<p>DRAWING TITLE:</p>	
<p>ENGINEER:</p>		<p>HYDRONIC PRIMARY/SECONDARY - 4 SEALED COMBUSTION BOILERS, INDIVIDUAL FPE VALVE, WITH SYSTEM PUMP</p>	
<p>DATE:</p>		<p>DRAWING No. H-PS-200-4IF-1</p>	
<p>BY:</p>		<p>DESIGNER: RSG 05/28/08</p>	
<p>DESCRIPTION:</p>		<p>CHECKED: JPH/05/23/08</p>	
<p>REV A RELEASED</p>		<p>SCALE: 1/8" = 1'-0"</p>	
<p>DESCRIPTION:</p>		<p>SIZE: 5"</p>	
<p>DESCRIPTION:</p>		<p>SCALE: 1/8" = 1'-0"</p>	
<p>DESCRIPTION:</p>		<p>SCALE: 1/8" = 1'-0"</p>	

