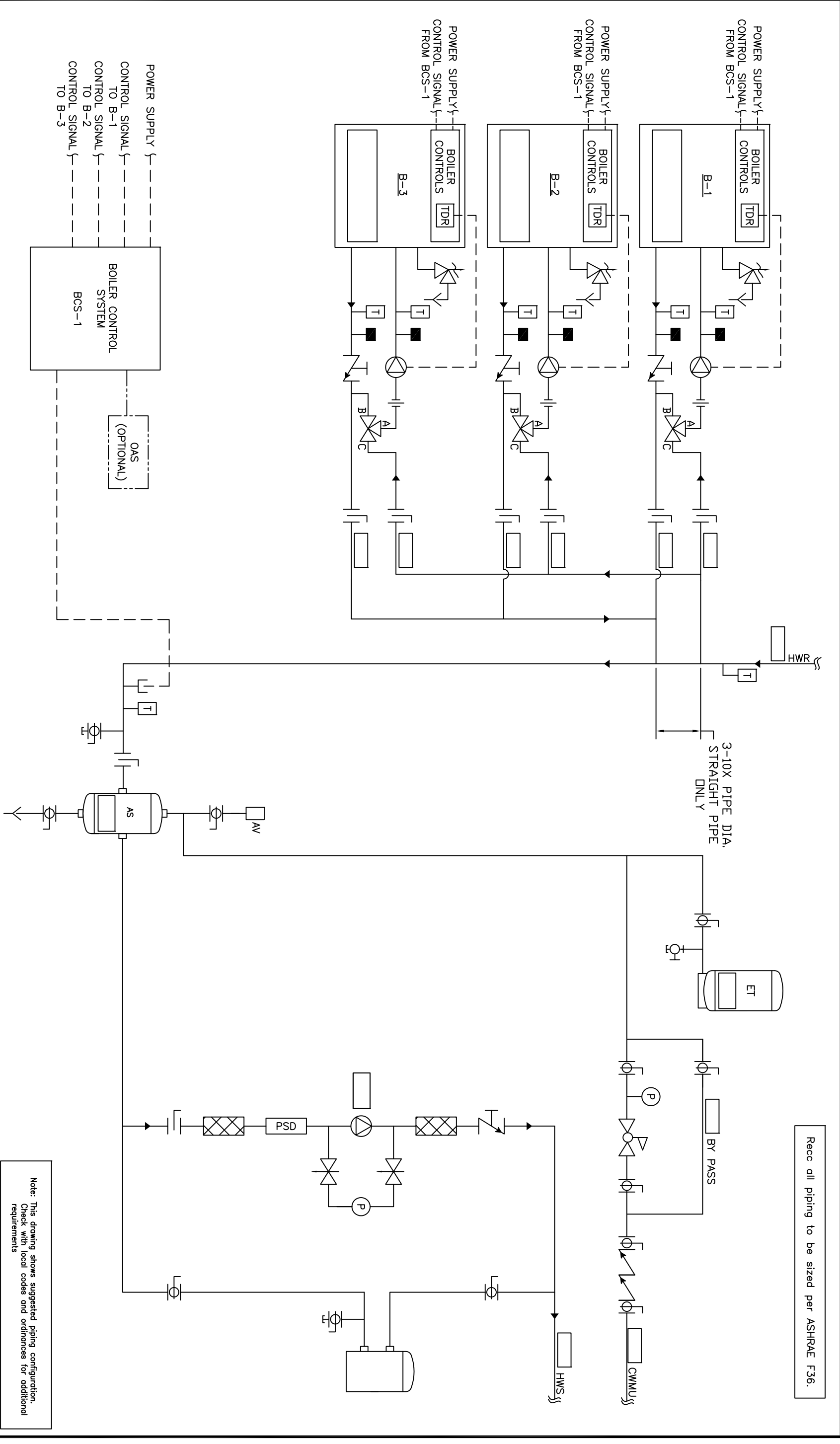


Rec all piping to be sized per ASHRAE F36.



Note: This drawing shows suggested piping configuration. Check with local codes and ordinances for additional requirements

REV		DESCRIPTION		BY	DATE	THIS DRAWING AND THE INFORMATION PERMITTED HEREIN IS THE PROPERTY OF CHC. CALIFORNIA HYDRAONICS CORP. COPIES ARE ISSUED IN STRICT CONFIDENCE AND SHALL NOT BE REPRODUCED OR COPIED, OR USED AS INSTALLATION OR SALE OF PRODUCT WITHOUT PRIOR WRITTEN PERMISSION OF CHC.		PROJECT NAME:		DRAWING TITLE:	
A	RELEASED			RSG	05/28/08	PROJECT LOCATION:		HYDRONIC PRIMARY/SECONDARY - 3 SEALED COMBUSTION BOILERS, INDIVIDUAL FPE VALVE, WITH SYSTEM PUMP		DRAWING No. H-PS-200-31F-1	
						ENGINEER:		CHECKED/TOLERANCES UNLESS OTHERWISE SPECIFIED		DRAWN BY/DATE DJK 05/23/08	
						CUSTOMER:		CHECKED/DATE DEC-3007		SCALE 5" = 0'	
								REV A		SCALE NTS	

