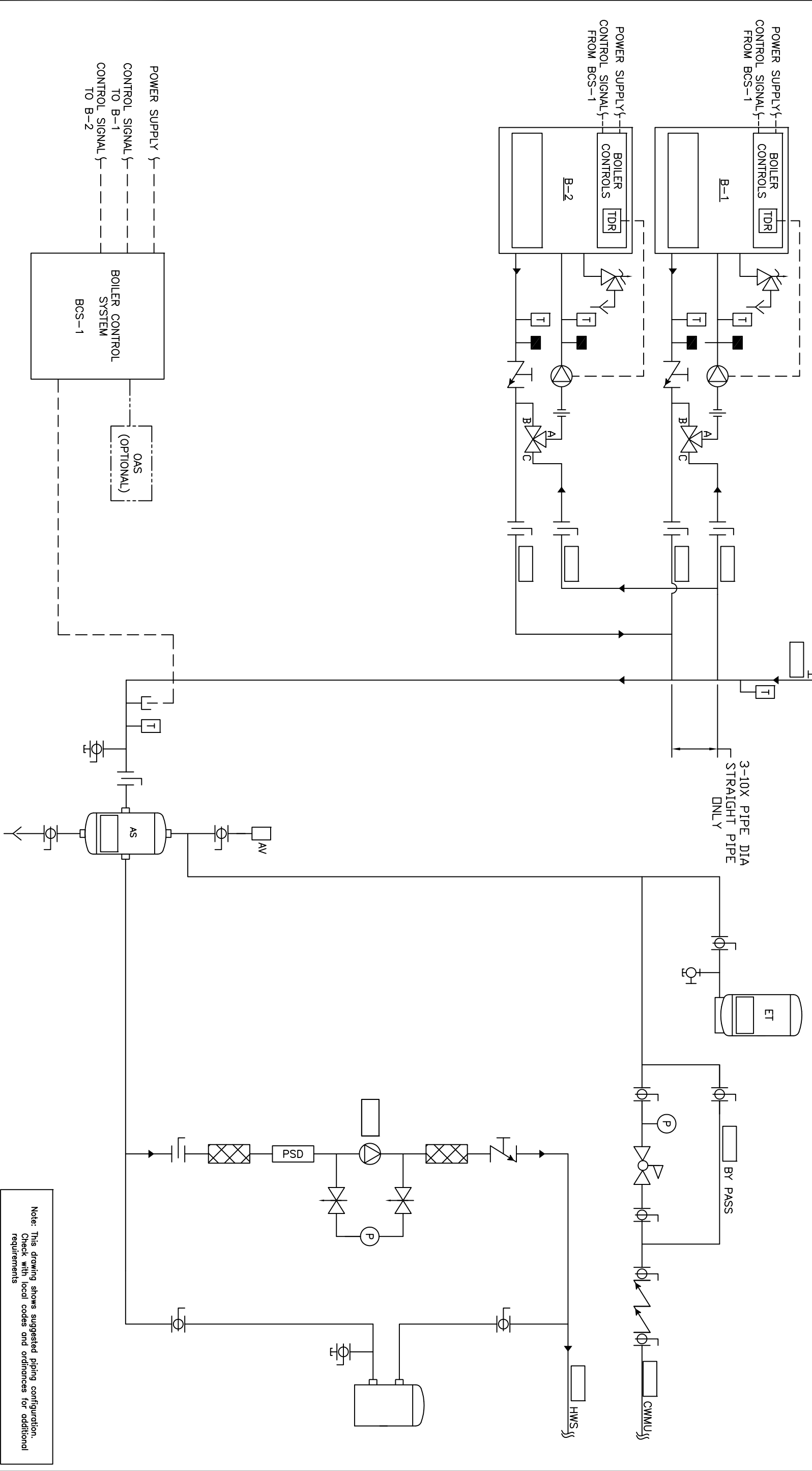


Rec all piping to be sized per ASHRAE F36.



POWER SUPPLY CONTROL SIGNAL FROM BCS-1

BOILER CONTROLS TDR B-1

BOILER CONTROLS TDR B-2

POWER SUPPLY CONTROL SIGNAL FROM BCS-1

BOILER CONTROL SYSTEM BCS-1

OAS (OPTIONAL)

HWR

3-10X PIPE DIA STRAIGHT PIPE ONLY

ET

BY PASS

CWMU

HWS

PSD

P

P

AV

AS

REV	DESCRIPTION	BY	DATE	THIS DRAWING AND THE INFORMATION PERMITTED HEREIN IS THE PROPERTY OF CHC. CALIFORNIA HYDRAONICS CORP. COPIES ARE ISSUED IN STRICT CONFIDENCE AND SHALL NOT BE REPRODUCED OR COPIED, OR USED AS INSTALLATION OR SALE OF PRODUCT WITHOUT PRIOR WRITTEN PERMISSION OF CHC.	PROJECT NAME:	DRAWING TITLE:	DRAWN BY/DATE	CHECKED	TOLERANCES UNLESS OTHERWISE SPECIFIED	ANGLE	SIZE	SCALE	REV
A	RELEASED	RSG	05/28/08		HYDRONIC PRIMARY/SECONDARY - 2 SEALED COMBUSTION BOILERS, INDIVIDUAL FPE VALVE, WITH SYSTEM PUMP	H-PS-200-2IF-1	05/23/08		300"	5"	D	A	

Note: This drawing shows suggested piping configuration. Check with local codes and ordinances for additional requirements

