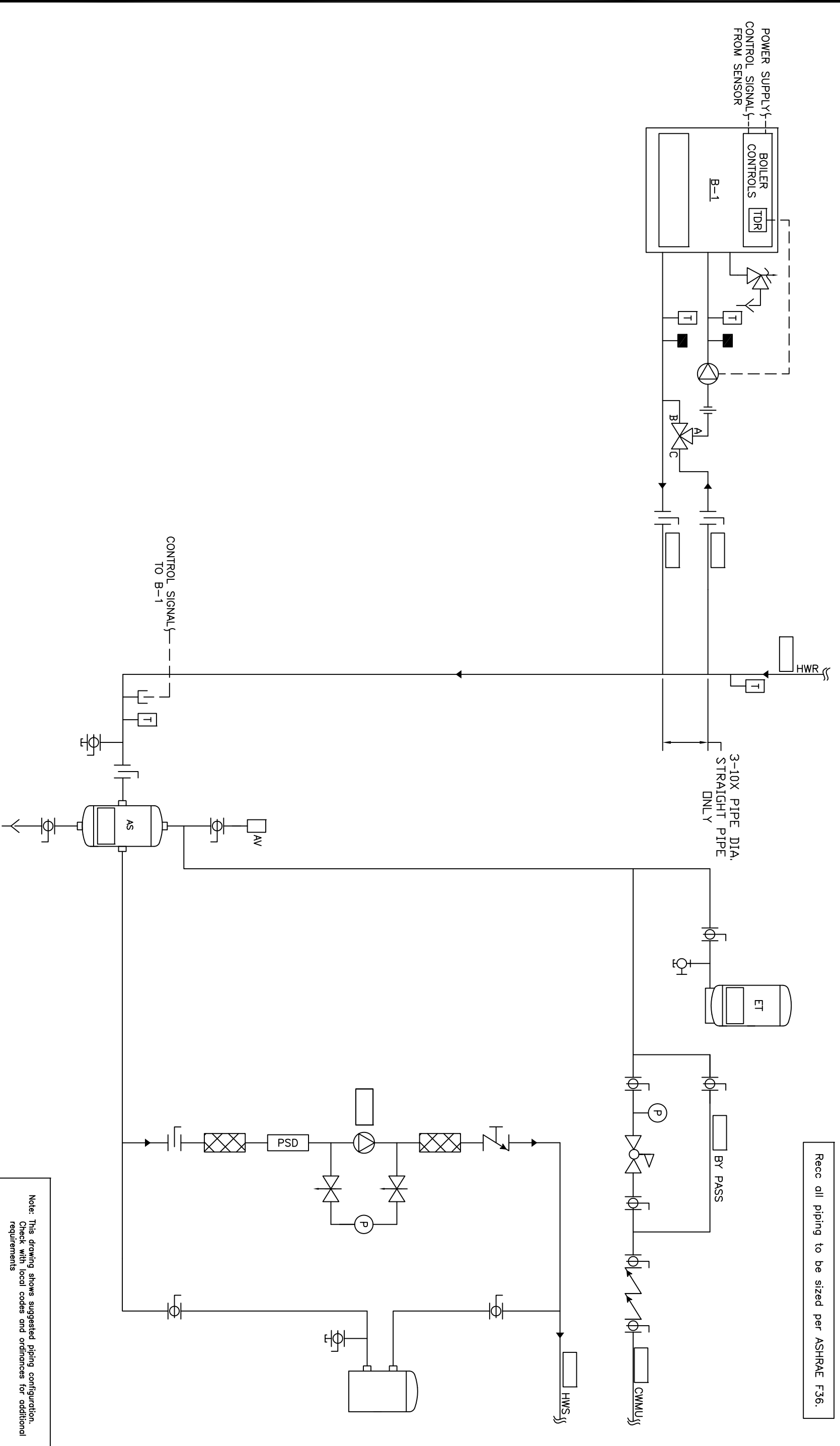


Rec all piping to be sized per ASHRAE F36.



CONTROL SIGNAL TO B-1

Note: This drawing shows suggested piping configuration. Check with local codes and ordinances for additional requirements

<p>THIS DRAWING AND THE INFORMATION CONTAINED HEREIN ARE THE PROPERTY OF CHC, CALIFORNIA HYDRONICS CORP. - CONSENT AND SHALL NOT BE REPRODUCED OR TRANSMITTED IN ANY FORM OR BY ANY MEANS, WITHOUT WRITTEN PERMISSION OF CHC.</p>		<p>PROJECT NAME: HYDRONIC PRIMARY/SECONDARY - SEALED COMBUSTION BOILER, INDIVIDUAL FPE VALVE, WITH SYSTEM PUMP</p>	
<p>PROJECT LOCATION: ENGINEER: CUSTOMER:</p>		<p>DRAWING No. H-PS-200-11F-1</p>	
<p>DESCRIPTION</p>		<p>REV A TOLERANCES UNLESS OTHERWISE SPECIFIED DRAWN BY/DWG 05/23/08 CHECKED/APP'D DEC. 500"</p>	
<p>REV A RELEASED</p>	<p>BY RSG 05/28/08</p>	<p>DATE</p>	<p>SCALE 0 NTS</p>

