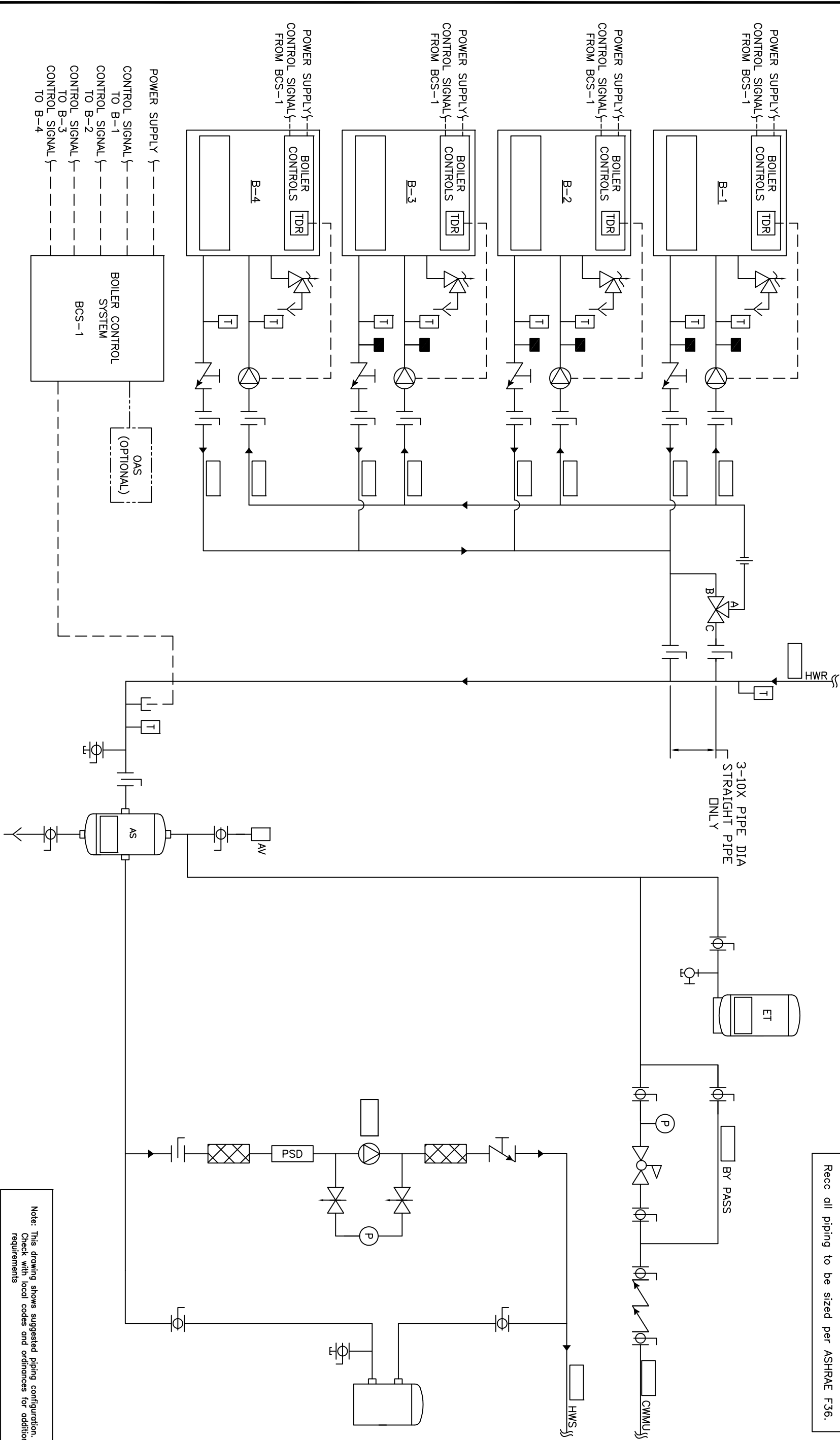


Recc all piping to be sized per ASHRAE F36.



				THIS DRAWING AND THE INFORMATION DEPICTED THEREIN IS THE PROPERTY OF CALIFORNIA HYDRAONICS CORP. COPIES ARE ISSUED IN STRICT CONFIDENCE AND SHALL NOT BE REPRODUCED OR COPIED, OR USED AS INSTALLATION OR SALE OF PRODUCT, WITHOUT PRIOR WRITTEN PERMISSION OF CHC.				PROJECT NAME:				DRAWING TITLE:			
								PROJECT LOCATION:				HYDRONIC PRIMARY/SECONDARY - 4 SEALED COMBUSTION BOILERS, COMMON FPE VALVE, WITH SYSTEM PUMP			
								ENGINEER:				DRAWING No.			
A	RELEASED			RSG 05/28/08								H-PS-200-4CF-1			
REV				DESCRIPTION				CUSTOMER:				TOLERANCES UNLESS OTHERWISE SPECIFIED			
				BY								DRAWN BY/DATE			
				DATE								05/23/08			
												CHECKED			
												APPROVED/DEC.			
												.500"			
												ANGLE			
												5°			
												SIZE			
												D			
												SCALE			
												NTS			
												REV			
												A			