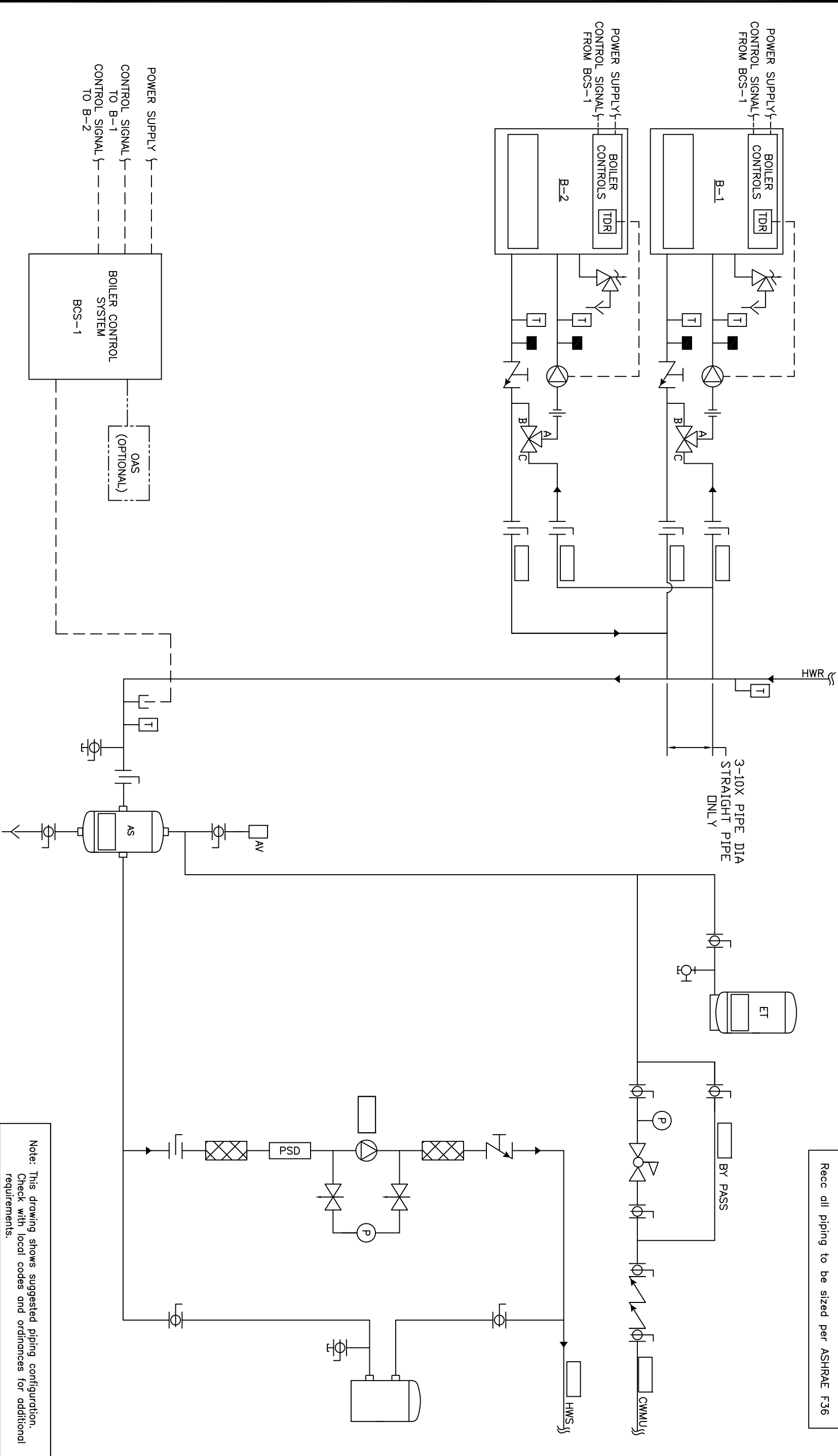


Recc all piping to be sized per ASHRAE F36



THIS DRAWING AND THE INFORMATION CONTAINED HEREIN ARE THE PROPERTY OF CHC, CALIFORNIA HYDRONICS CORP. - CONFERENCE AND SHALL NOT BE REPRODUCED OR TRANSMITTED IN ANY FORM OR BY ANY MEANS, WITHOUT PRIOR WRITTEN PERMISSION OF CHC.		PROJECT NAME:		DRAWING TITLE:	
PROJECT LOCATION:		HYDRONIC PRIMARY/SECONDARY - 2 ATMOSPHERIC BOILERS, INDIVIDUAL FPE VALVE, WITH SYSTEM PUMP		REV	
ENGINEER:		DRAWING No.		A	
CUSTOMER:		H-PS-100-2IF-1		TOLERANCES UNLESS OTHERWISE SPECIFIED	
BY		DATE		500"	
DESCRIPTION		D.K.		5/23/08	
REV		A		RELEASED	
RSG 05/28/08		BY		DATE	

