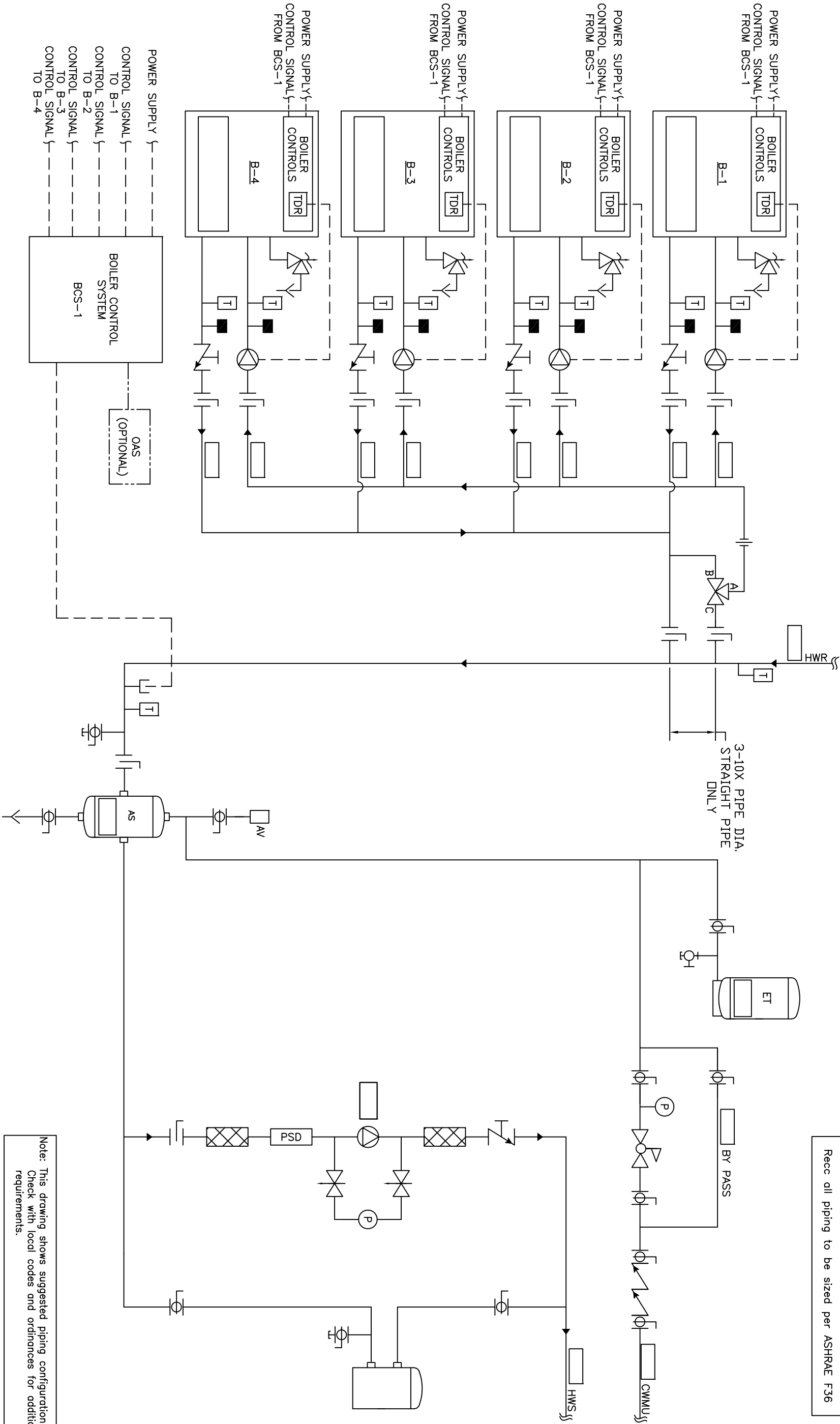


Recc all piping to be sized per ASHRAE F36



Note: This drawing shows suggested piping configuration. Check with local codes and ordinances for additional requirements.

		PROJECT NAME:		THIS DRAWING AND THE INFORMATION DEPICTED THEREIN IS THE PROPERTY OF CHC ENGINEERING, INC. COPIES ARE ISSUED IN STRICT CONFIDENCE AND SHALL NOT BE REPRODUCED OR USED AS THE BASIS FOR THE MANUFACTURING, INSTALLATION OR OPERATION OF ANY EQUIPMENT WITHOUT PRIOR WRITTEN PERMISSION OF CHC.	
		PROJECT LOCATION:		DRAWING TITLE:	
		ENGINEER:		HYDRONIC PRIMARY/SECONDARY - 4 ATMOSPHERIC BOILERS, COMMON FPE VALVE, WITH SYSTEM PUMP	
		CUSTOMER:		DRAWING No. H-PS-100-4CF-1	
		BY		DATE	
		DESCRIPTION		DRAWN BY/DATE: ps/23/08	
				CHECKED/DATE: ps/23/08	
				DESIGNED/DATE: ps/23/08	
				SCALE: 1"=10'-0"	
				SHEET: 1 OF 1	
				REV: A	
				RELEASED	
				CALIFORNIA • RENO 800.486.4858	
				WASHINGTON • OREGON	
				ALASKA • IDAHO • MONTANA	
				888.690.0090	