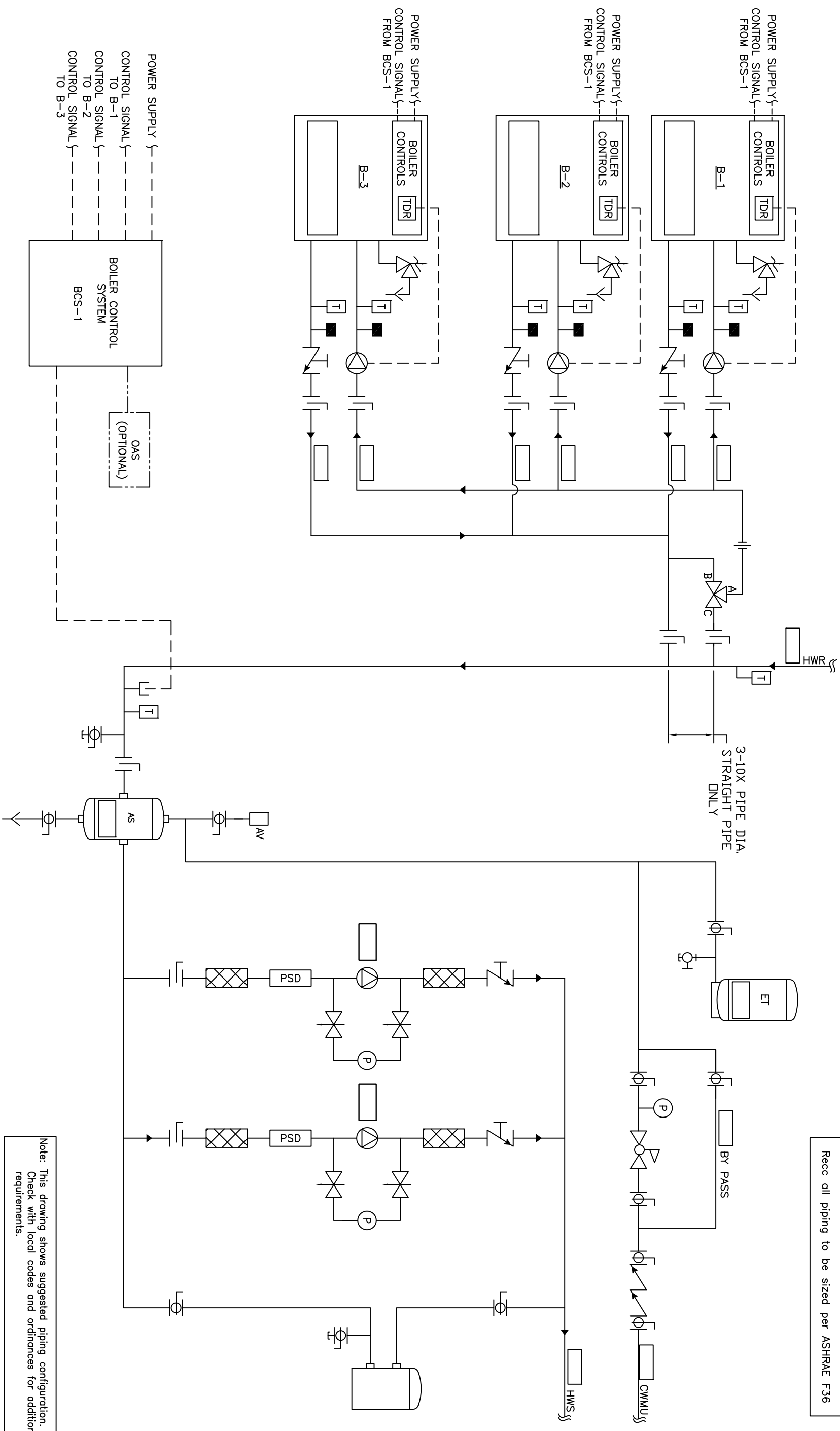


Recc all piping to be sized per ASHRAE F36



Note: This drawing shows suggested piping configuration. Check with local codes and ordinances for additional requirements.

			THIS DRAWING AND THE INFORMATION DERIVED THEREIN IS THE PROPERTY OF COLUMBIAN SYSTEMS, A DIVISION OF COLUMBIAN INDUSTRIES, CORP., AND IS UNCLASSIFIED CONFIDENTIAL.			
			PROJECT LOCATION:			
			ENGINEER:			
			DRAWING NO.			
			H-PS-100-3CF-2			
			TOLERANCES UNLESS OTHERWISE SPECIFIED			
			DRAIN BY DATE		SCALE	
			D.K. 05/23/08		N.T.S.	
			CHECKED		APPROVED DEC.	
			5.00"		ANGLE 5"	
			SIZE D		REV	
					A	
			CUSTOMER:			
			H-PS-100-3CF-2			
			ENGINEER:			
			PROJECT LOCATION:			
			THIS DRAWING AND THE INFORMATION DERIVED THEREIN IS THE PROPERTY OF COLUMBIAN SYSTEMS, A DIVISION OF COLUMBIAN INDUSTRIES, CORP., AND IS UNCLASSIFIED CONFIDENTIAL.			
			PROJECT LOCATION:			
			ENGINEER:			
			DRAWING NO.			
			H-PS-100-3CF-2			
			TOLERANCES UNLESS OTHERWISE SPECIFIED			
			DRAIN BY DATE		SCALE	
			D.K. 05/23/08		N.T.S.	
			CHECKED		APPROVED DEC.	
			5.00"		ANGLE 5"	
			SIZE D		REV	
					A	
			CUSTOMER:			
			H-PS-100-3CF-2			
			ENGINEER:			
			PROJECT LOCATION:			
			THIS DRAWING AND THE INFORMATION DERIVED THEREIN IS THE PROPERTY OF COLUMBIAN SYSTEMS, A DIVISION OF COLUMBIAN INDUSTRIES, CORP., AND IS UNCLASSIFIED CONFIDENTIAL.			
			PROJECT LOCATION:			
			ENGINEER:			
			DRAWING NO.			
			H-PS-100-3CF-2			
			TOLERANCES UNLESS OTHERWISE SPECIFIED			
			DRAIN BY DATE		SCALE	
			D.K. 05/23/08		N.T.S.	
			CHECKED		APPROVED DEC.	
			5.00"		ANGLE 5"	
			SIZE D		REV	
					A	
			CUSTOMER:			
			H-PS-100-3CF-2			
			ENGINEER:			
			PROJECT LOCATION:			
			THIS DRAWING AND THE INFORMATION DERIVED THEREIN IS THE PROPERTY OF COLUMBIAN SYSTEMS, A DIVISION OF COLUMBIAN INDUSTRIES, CORP., AND IS UNCLASSIFIED CONFIDENTIAL.			
			PROJECT LOCATION:			
			ENGINEER:			
			DRAWING NO.			
			H-PS-100-3CF-2			
			TOLERANCES UNLESS OTHERWISE SPECIFIED			
			DRAIN BY DATE		SCALE	
			D.K. 05/23/08		N.T.S.	
			CHECKED		APPROVED DEC.	
			5.00"		ANGLE 5"	
			SIZE D		REV	
					A	
			CUSTOMER:			
			H-PS-100-3CF-2			
			ENGINEER:			
			PROJECT LOCATION:			
			THIS DRAWING AND THE INFORMATION DERIVED THEREIN IS THE PROPERTY OF COLUMBIAN SYSTEMS, A DIVISION OF COLUMBIAN INDUSTRIES, CORP., AND IS UNCLASSIFIED CONFIDENTIAL.			
			PROJECT LOCATION:			
			ENGINEER:			
			DRAWING NO.			
			H-PS-100-3CF-2			
			TOLERANCES UNLESS OTHERWISE SPECIFIED			
			DRAIN BY DATE		SCALE	
			D.K. 05/23/08		N.T.S.	
			CHECKED		APPROVED DEC.	
			5.00"		ANGLE 5"	
			SIZE D		REV	
					A	
			CUSTOMER:			
			H-PS-100-3CF-2			
			ENGINEER:			
			PROJECT LOCATION:			
			THIS DRAWING AND THE INFORMATION DERIVED THEREIN IS THE PROPERTY OF COLUMBIAN SYSTEMS, A DIVISION OF COLUMBIAN INDUSTRIES, CORP., AND IS UNCLASSIFIED CONFIDENTIAL.			
			PROJECT LOCATION:			
			ENGINEER:			
			DRAWING NO.			
			H-PS-100-3CF-2			
			TOLERANCES UNLESS OTHERWISE SPECIFIED			
			DRAIN BY DATE		SCALE	
			D.K. 05/23/08		N.T.S.	
			CHECKED		APPROVED DEC.	
			5.00"		ANGLE 5"	
			SIZE D		REV	
					A	
			CUSTOMER:			
			H-PS-100-3CF-2			
			ENGINEER:			
			PROJECT LOCATION:			
			THIS DRAWING AND THE INFORMATION DERIVED THEREIN IS THE PROPERTY OF COLUMBIAN SYSTEMS, A DIVISION OF COLUMBIAN INDUSTRIES, CORP., AND IS UNCLASSIFIED CONFIDENTIAL.			
			PROJECT LOCATION:			
			ENGINEER:			
			DRAWING NO.			
			H-PS-100-3CF-2			
			TOLERANCES UNLESS OTHERWISE SPECIFIED			
			DRAIN BY DATE		SCALE	
			D.K. 05/23/08		N.T.S.	
			CHECKED		APPROVED DEC.	
			5.00"		ANGLE 5"	
			SIZE D		REV	
					A	
			CUSTOMER:			
			H-PS-100-3CF-2			
			ENGINEER:			
			PROJECT LOCATION:			
			THIS DRAWING AND THE INFORMATION DERIVED THEREIN IS THE PROPERTY OF COLUMBIAN SYSTEMS, A DIVISION OF COLUMBIAN INDUSTRIES, CORP., AND IS UNCLASSIFIED CONFIDENTIAL.			
			PROJECT LOCATION:			
			ENGINEER:			
			DRAWING NO.			
			H-PS-100-3CF-2			
			TOLERANCES UNLESS OTHERWISE SPECIFIED			
			DRAIN BY DATE		SCALE	
			D.K. 05/23/08		N.T.S.	
			CHECKED		APPROVED DEC.	
			5.00"		ANGLE 5"	
			SIZE D		REV	
					A	
			CUSTOMER:			
			H-PS-100-3CF-2			
			ENGINEER:			
			PROJECT LOCATION:			
			THIS DRAWING AND THE INFORMATION DERIVED THEREIN IS THE PROPERTY OF COLUMBIAN SYSTEMS, A DIVISION OF COLUMBIAN INDUSTRIES, CORP., AND IS UNCLASSIFIED CONFIDENTIAL.			
			PROJECT LOCATION:			
			ENGINEER:			
			DRAWING NO.			
			H-PS-100-3CF-2			
			TOLERANCES UNLESS OTHERWISE SPECIFIED			
			DRAIN BY DATE		SCALE	
			D.K. 05/23/08		N.T.S.	
			CHECKED		APPROVED DEC.	
			5.00"		ANGLE 5"	
			SIZE D		REV	
					A	
			CUSTOMER:			
			H-PS-100-3CF-2			
			ENGINEER:			
			PROJECT LOCATION:			
			THIS DRAWING AND THE INFORMATION DERIVED THEREIN IS THE PROPERTY OF COLUMBIAN SYSTEMS, A DIVISION OF COLUMBIAN INDUSTRIES, CORP., AND IS UNCLASSIFIED CONFIDENTIAL.			
			PROJECT LOCATION:			
			ENGINEER:			
			DRAWING NO.			
			H-PS-100-3CF-2			
			TOLERANCES UNLESS OTHERWISE SPECIFIED			
			DRAIN BY DATE		SCALE	
			D.K. 05/23/08		N.T.S.	
			CHECKED		APPROVED DEC.	
			5.00"		ANGLE 5"	
			SIZE D		REV	
					A	
			CUSTOMER:			
			H-PS-100-3CF-2			
			ENGINEER:			
			PROJECT LOCATION:			
			THIS DRAWING AND THE INFORMATION DERIVED THEREIN IS THE PROPERTY OF COLUMBIAN SYSTEMS, A DIVISION OF COLUMBIAN INDUSTRIES, CORP., AND IS UNCLASSIFIED CONFIDENTIAL.			
			PROJECT LOCATION:			
			ENGINEER:			
			DRAWING NO.			
			H-PS-100-3CF-2			
			TOLERANCES UNLESS OTHERWISE SPECIFIED			
			DRAIN BY DATE		SCALE	
			D.K. 05/23/08		N.T.S.	
			CHECKED		APPROVED DEC.	
			5.00"		ANGLE 5"	
			SIZE D		REV	
					A	
			CUSTOMER:			
			H-PS-100-3CF-2			
			ENGINEER:			
			PROJECT LOCATION:			
			THIS DRAWING AND THE INFORMATION DERIVED THEREIN IS THE PROPERTY OF COLUMBIAN SYSTEMS, A DIVISION OF COLUMBIAN INDUSTRIES, CORP., AND IS UNCLASSIFIED CONFIDENTIAL.			
			PROJECT LOCATION:			
			ENGINEER:			
			DRAWING NO.			
			H-PS-100-3CF-2			
			TOLERANCES UNLESS OTHERWISE SPECIFIED			
			DRAIN BY DATE		SCALE	
			D.K. 05/23/08		N.T.S.	
			CHECKED		APPROVED DEC.	
			5.00"		ANGLE 5"	
			SIZE D		REV	
					A	
			CUSTOMER:			
			H-PS-100-3CF-2			
			ENGINEER:			
			PROJECT LOCATION:			
			THIS DRAWING AND THE INFORMATION DERIVED THEREIN IS THE PROPERTY OF COLUMBIAN SYSTEMS, A DIVISION OF COLUMBIAN INDUSTRIES, CORP., AND IS UNCLASSIFIED CONFIDENTIAL.			
			PROJECT LOCATION:			
			ENGINEER:			
			DRAWING NO.			
			H-PS-100-3CF-2			
			TOLERANCES UNLESS OTHERWISE SPECIFIED			
			DRAIN BY DATE		SCALE	
			D.K. 05/23/08		N.T.S.	
			CHECKED		APPROVED DEC.	
			5.00"		ANGLE 5"	
			SIZE D		REV	
					A	
			CUSTOMER:			
			H-PS-100-3CF-2			
			ENGINEER:			
			PROJECT LOCATION:			
			THIS DRAWING AND THE INFORMATION DERIVED THEREIN IS THE PROPERTY OF COLUMBIAN SYSTEMS, A DIVISION OF COLUMBIAN INDUSTRIES, CORP., AND IS UNCLASSIFIED CONFIDENTIAL.			
			PROJECT LOCATION:			
			ENGINEER:			
			DRAWING NO.			
			H-PS-100-3CF-2			
			TOLERANCES UNLESS OTHERWISE SPECIFIED			
			DRAIN BY DATE		SCALE	
			D.K. 05/23/08		N.T.S.	
			CHECKED		APPROVED DEC.	
			5.00"		ANGLE 5"	
			SIZE D		REV	
					A	
			CUSTOMER:			
			H-PS-100-3CF-2			
			ENGINEER:			
			PROJECT LOCATION:			
			THIS DRAWING AND THE INFORMATION DERIVED THEREIN IS THE PROPERTY OF COLUMBIAN SYSTEMS, A DIVISION OF COLUMBIAN INDUSTRIES, CORP., AND IS UNCLASSIFIED CONFIDENTIAL.			
			PROJECT LOCATION:			
			ENGINEER:			
			DRAWING NO.			
			H-PS-100-3CF-2			
			TOLERANCES UNLESS OTHERWISE SPECIFIED			
			DRAIN BY DATE		SCALE	
			D.K. 05/23/08		N.T.S.	
			CHECKED		APPROVED DEC.	
			5.00"		ANGLE 5"	
			SIZE D		REV	
					A	
			CUSTOMER:			
			H-PS-100-3CF-2			
			ENGINEER:			
			PROJECT LOCATION:			
			THIS DRAWING AND THE INFORMATION DERIVED THEREIN IS THE PROPERTY OF COLUMBIAN SYSTEMS, A DIVISION OF COLUMBIAN INDUSTRIES, CORP., AND IS UNCLASSIFIED CONFIDENTIAL.			
			PROJECT LOCATION:			
			ENGINEER:			
			DRAWING NO.			
			H-PS-100-3CF-2			
			TOLERANCES UNLESS OTHERWISE SPECIFIED			
			DRAIN BY DATE		SCALE	
			D.K. 05/23/08		N.T.S.	
			CHECKED		APPROVED DEC.	
			5.00"		ANGLE 5"	
			SIZE D		REV	
					A	
			CUSTOMER:			
			H-PS-100-3CF-2			
			ENGINEER:			
			PROJECT LOCATION:			
			THIS DRAWING AND THE INFORMATION DERIVED THEREIN IS THE PROPERTY OF COLUMBIAN SYSTEMS, A DIVISION OF COLUMBIAN INDUSTRIES, CORP., AND IS UNCLASSIFIED CONFIDENTIAL.			
			PROJECT LOCATION:			
			ENGINEER:			
			DRAWING NO.			
			H-PS-100-3CF-2			
			TOLERANCES UNLESS OTHERWISE SPECIFIED			
			DRAIN BY DATE		SCALE	
			D.K. 05/23/08		N.T.S.	
			CHECKED		APPROVED DEC.	
			5.00"		ANGLE 5"	
			SIZE D		REV	
					A	
			CUSTOMER:			
			H-PS-100-3CF-2			
			ENGINEER:			
			PROJECT LOCATION:			
			THIS DRAWING AND THE INFORMATION DERIVED THEREIN IS THE PROPERTY OF COLUMBIAN SYSTEMS, A DIVISION OF COLUMBIAN INDUSTRIES, CORP., AND IS UNCLASSIFIED CONFIDENTIAL.			
			PROJECT LOCATION:			
			ENGINEER:			
			DRAWING NO.			
			H-PS-100-3CF-2			
			TOLERANCES UNLESS OTHERWISE SPECIFIED			
			DRAIN BY DATE		SCALE	
			D.K. 05/23/08		N.T.S.	
			CHECKED		APPROVED DEC.	
			5.00"		ANGLE 5"	
			SIZE D		REV	
					A	
			CUSTOMER:			
			H-PS-100-3CF-2			
			ENGINEER:			
			PROJECT LOCATION:			
			THIS DRAWING AND THE INFORMATION DERIVED THEREIN IS THE PROPERTY OF COLUMBIAN SYSTEMS, A DIVISION OF COLUMBIAN INDUSTRIES, CORP., AND IS UNCLASSIFIED CONFIDENTIAL.			
			PROJECT LOCATION:			
			ENGINEER:			
			DRAWING NO.			
			H-PS-100-3CF-2			
			TOLERANCES UNLESS OTHERWISE SPECIFIED			
			DRAIN BY DATE		SCALE	
			D.K. 05/23/08		N.T.S.	
			CHECKED		APPROVED DEC.	
			5.00"		ANGLE 5"	
			SIZE D		REV	
					A	
			CUSTOMER:			
			H-PS-100-3CF-2			
			ENGINEER:			
			PROJECT LOCATION:			
			THIS DRAWING AND THE INFORMATION DERIVED THEREIN IS THE PROPERTY OF COLUMBIAN SYSTEMS, A DIVISION OF COLUMBIAN INDUSTRIES, CORP., AND IS UNCLASSIFIED CONFIDENTIAL.			
			PROJECT LOCATION:			
			ENGINEER:			
			DRAWING NO.			
			H-PS-100-3CF-2			
			TOLERANCES UNLESS OTHERWISE SPECIFIED			
			DRAIN BY DATE		SCALE	
			D.K. 05/23/08		N.T.S.	
			CHECKED		APPROVED DEC.	
			5.00"		ANGLE 5"	
			SIZE D		REV	
					A	
			CUSTOMER:			
			H-PS-100-3CF-2			
			ENGINEER:			
			PROJECT LOCATION:			
			THIS DRAWING AND THE INFORMATION DERIVED THEREIN IS THE PROPERTY OF COLUMBIAN SYSTEMS, A DIVISION OF COLUMBIAN INDUSTRIES, CORP., AND IS UNCLASSIFIED CONFIDENTIAL.			
			PROJECT LOCATION:			
			ENGINEER:			
			DRAWING NO.			
			H-PS-100-3CF-2			
			TOLERANCES UNLESS OTHERWISE SPECIFIED			
			DRAIN BY DATE		SCALE	
			D.K. 05/23/08		N.T.S.	
			CHECKED		APPROVED DEC.	
			5.00"		ANGLE 5"	
			SIZE D		REV	
					A	
			CUSTOMER:			
			H-PS-100-3CF-2			
			ENGINEER:			
			PROJECT LOCATION:			
			THIS DRAWING AND THE INFORMATION DERIVED THEREIN IS THE PROPERTY OF COLUMBIAN SYSTEMS, A DIVISION OF COLUMBIAN INDUSTRIES, CORP., AND IS UNCLASSIFIED CONFIDENTIAL.			
			PROJECT LOCATION:			
			ENGINEER:			
			DRAWING NO.			
			H-PS-100-3CF-2			
			TOLERANCES UNLESS OTHERWISE SPECIFIED			
			DRAIN BY DATE		SCALE	
			D.K. 05/23/08		N.T.S.	
			CHECKED		APPROVED DEC.	
			5.00"		ANGLE 5"	
			SIZE D		REV	
					A	
			CUSTOMER:			
			H-PS-100-3CF-2			
</						