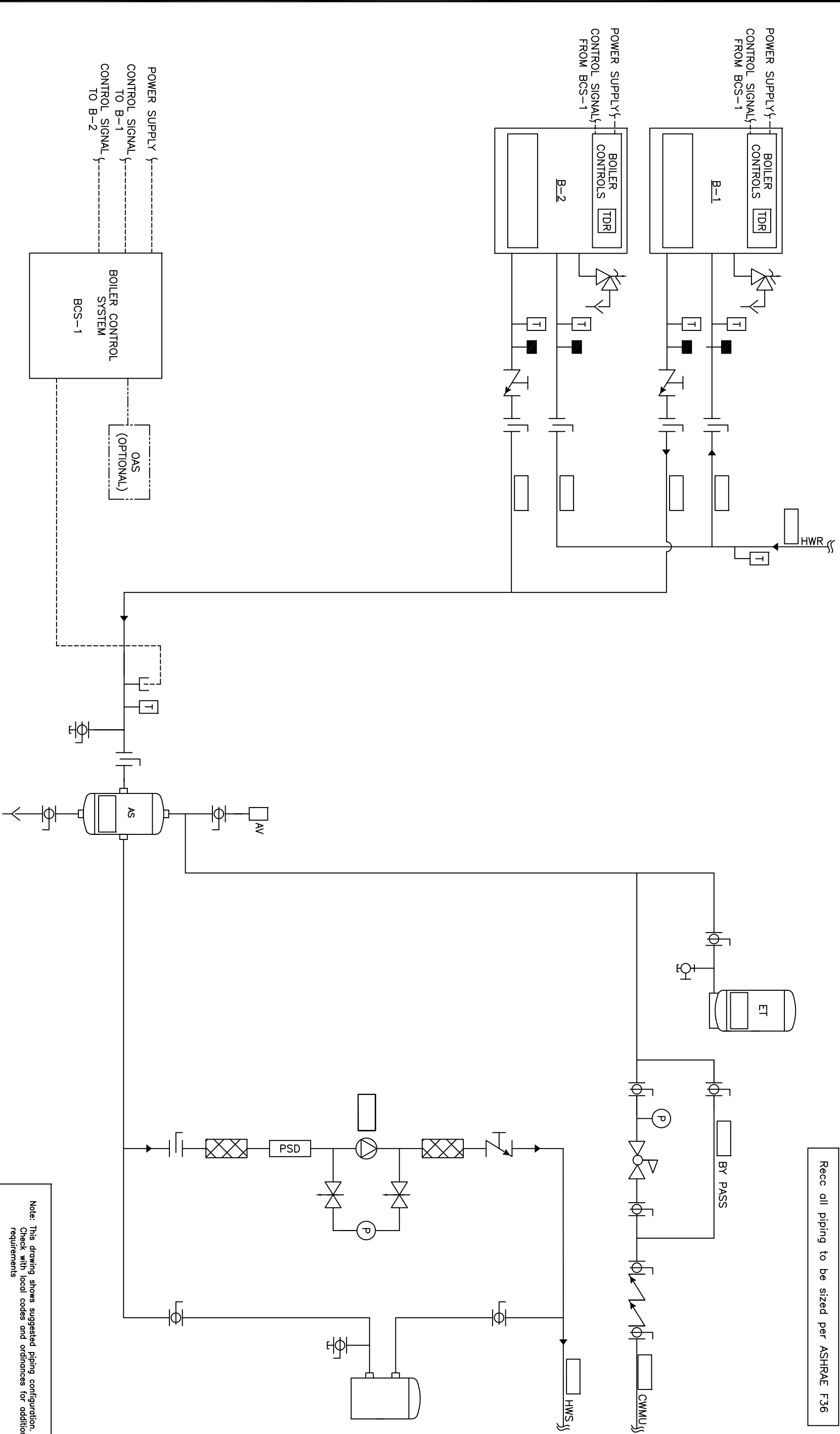




Recc all piping to be sized per ASHRAE F36



				THIS DRAWING AND THE INFORMATION DEPICTED THEREIN IS THE PROPERTY OF CHC, CALIFORNIA HYDROTECHNICS CORP. COPIES ARE ISSUED IN STRICT CONFIDENCE AND ARE NOT TO BE REPRODUCED OR COPIED OR USED AS THE BASIS FOR THE MANUFACTURING, INSTALLATION OR SALE OF PRODUCT WITHOUT PRIOR WRITTEN PERMISSION OF CHC.		PROJECT NAME:		DRAWING TITLE:	
						PROJECT LOCATION:		HYDRONIC CONSTANT VOLUME - 2 SEALED COMBUSTION BOILERS, NO TEMP PROTECTION WITH SYSTEM PUMP	
						ENGINEER:		DRAWING No.	
A		RELEASED		D.K		5/23/08		H-CV-200-2XX-1	
REV		DESCRIPTION		BY		DATE		TOLERANCES UNLESS OTHERWISE SPECIFIED	
								CHECKED APPROVED DEC. 500" 5 0 SCALE NTS	





CALIFORNIA • RENO
800.486.4858
WASHINGTON • OREGON
ALASKA • IDAHO • MONTANA
888.690.0090