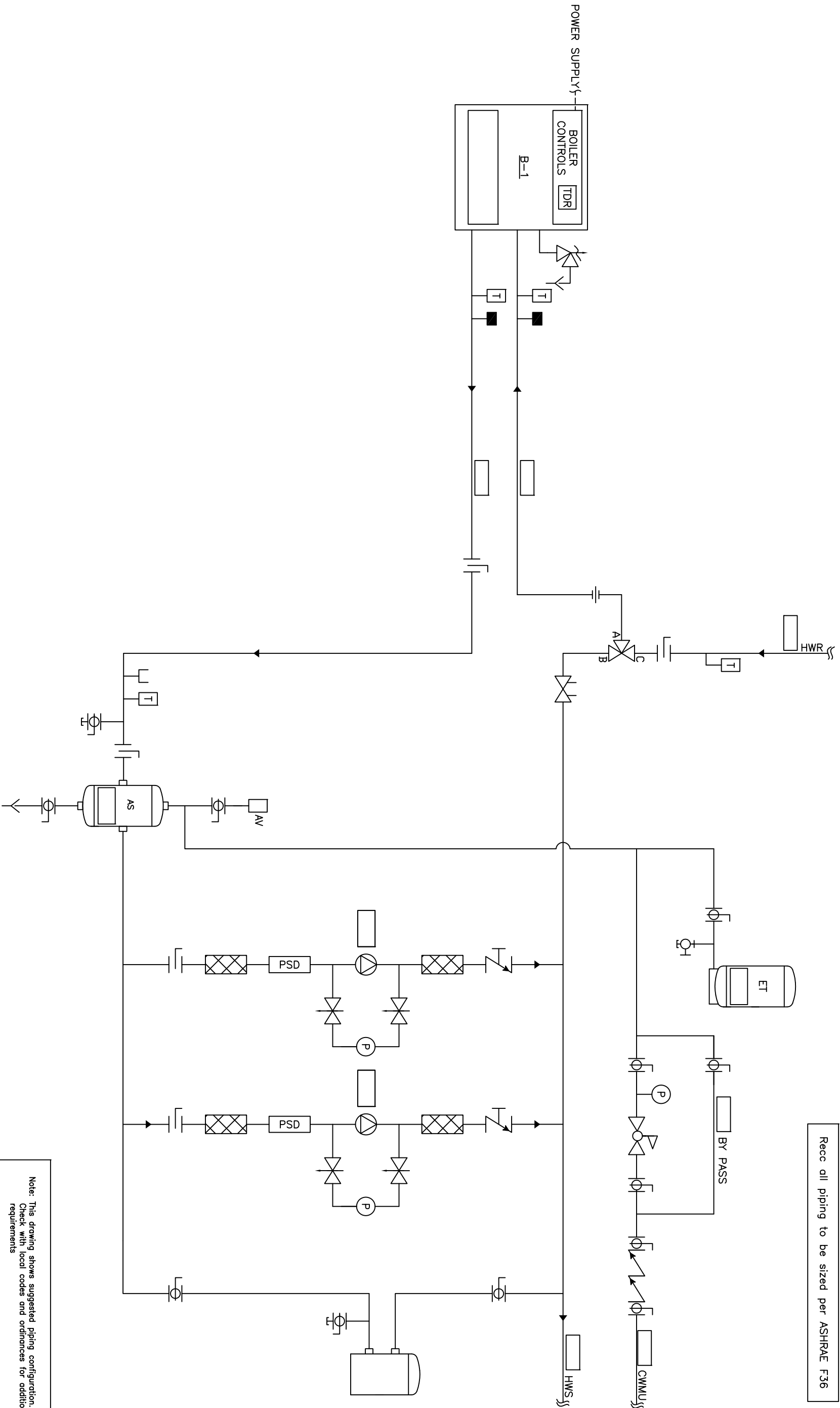


Recc all piping to be sized per ASHRAE F36



Note: This drawing shows suggested piping configuration.
Check with local codes and ordinances for additional
requirements

THIS DRAWING AND THE INFORMATION CONTAINED HEREIN ARE THE PROPERTY OF CHC, CALIFORNIA HYDRONICS CORP. - CONFERENCE AND SHALL NOT BE USED AS THE BASIS FOR THE MANUFACTURING, INSTALLATION OR SALE OF PRODUCT WITHOUT PRIOR WRITTEN PERMISSION OF CHC.		PROJECT NAME: HYDRONIC CONSTANT VOLUME - SEALED COMBUSTION BOILER, INDIVIDUAL FPE VALVE, WITH 2 SYSTEM PUMPS		DRAWING No. H-CV-200-11F-2		REV A	
PROJECT LOCATION:		ENGINEER:		DRAWN BY/DATE D.K. 05/23/08		CHECKED/DATE 500" 5" D	
CUSTOMER:		TOLERANCES UNLESS OTHERWISE SPECIFIED		300" 5" D		SCALE NTS	
DESCRIPTION		BY		DATE		REV	
RELEASED		RSG 05/28/08					